

Drafting with Weaving Software

Enter Data

◆ Enter Data

- Threading, treading, tie-up, dents, and color.

Questions:

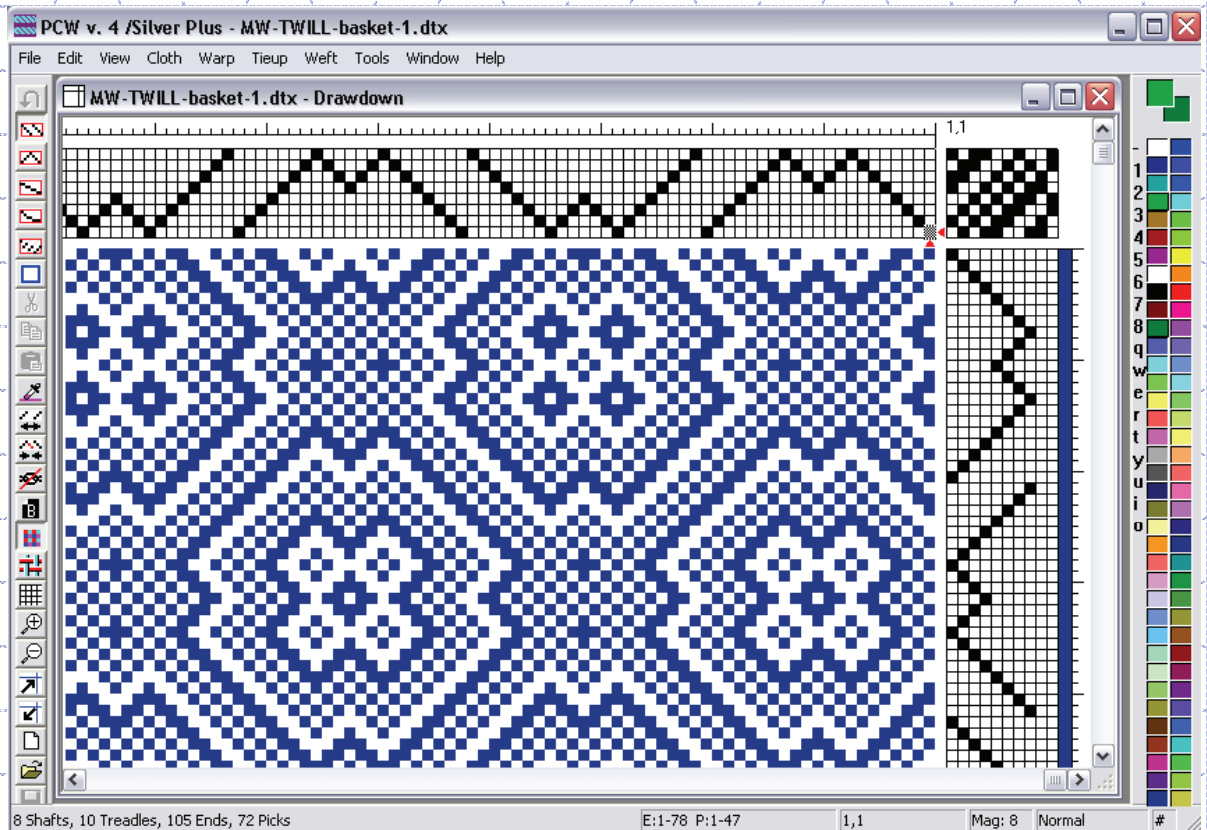
- ◆ Insert/ Delete keys will insert/delete ends, picks, treadles. (Yes/No)
- ◆ Blank ends, picks, and treadles are allowed. (Yes/No)

Fiberworks Bronze/Silver

Enter Data

- a. Mouse: Click and Drag
- b. Keyboard and Number Pad
- c. Fill
- d. Tieups
- e. Thickness
- f. Color
- g. Weave As Drawn In
- h. Add Tabby

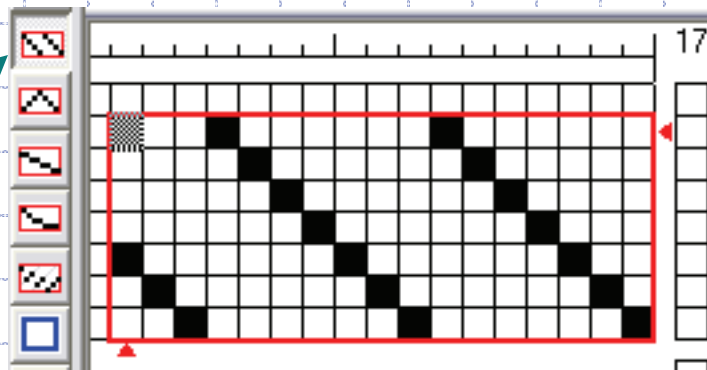
Insert/Delete OK
Blanks OK



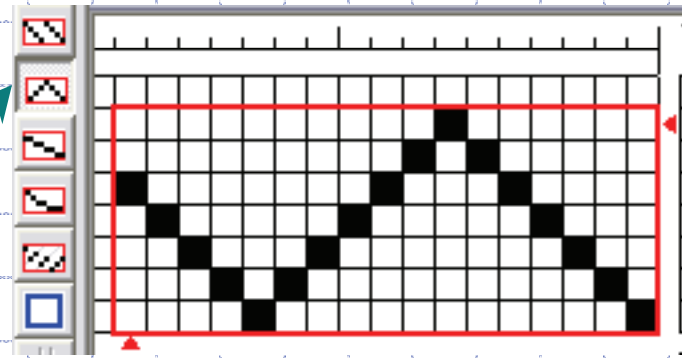
Fiberworks Bronze/Silver

a. Mouse: Click and Drag

◆ Toolbar icons and results



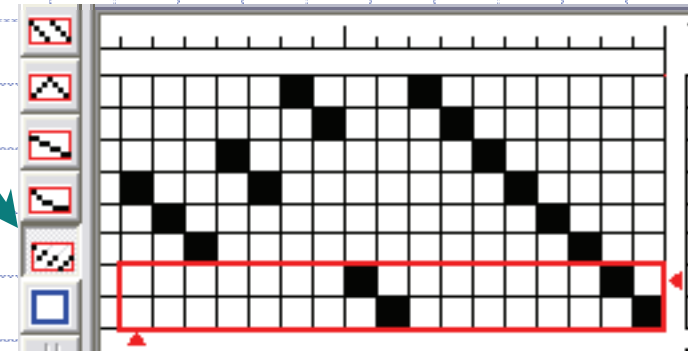
Straight



Point

Choose an icon and click and drag a box to fill with the threading.

Network



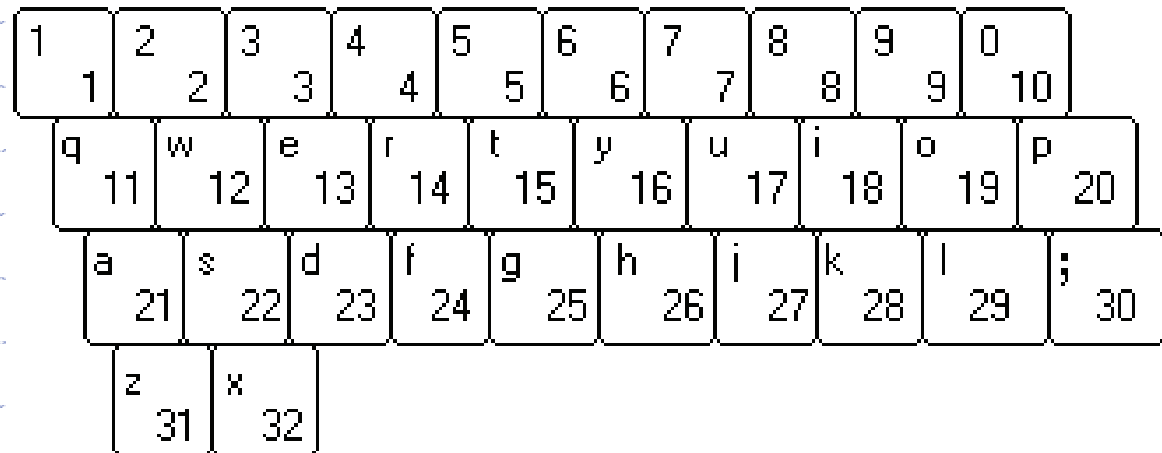
Fiberworks Bronze/Silver

b. Keyboard and Number Pad

Type shafts/treadles directly from the keyboard. Keyboard layout has an easy visual mnemonic.

Or type two digit numbers from the number pad when scroll lock and num lock are both on. (06 for shaft 6, 16 for shaft 16)

Tie-ups can also be typed using the + and - keys.

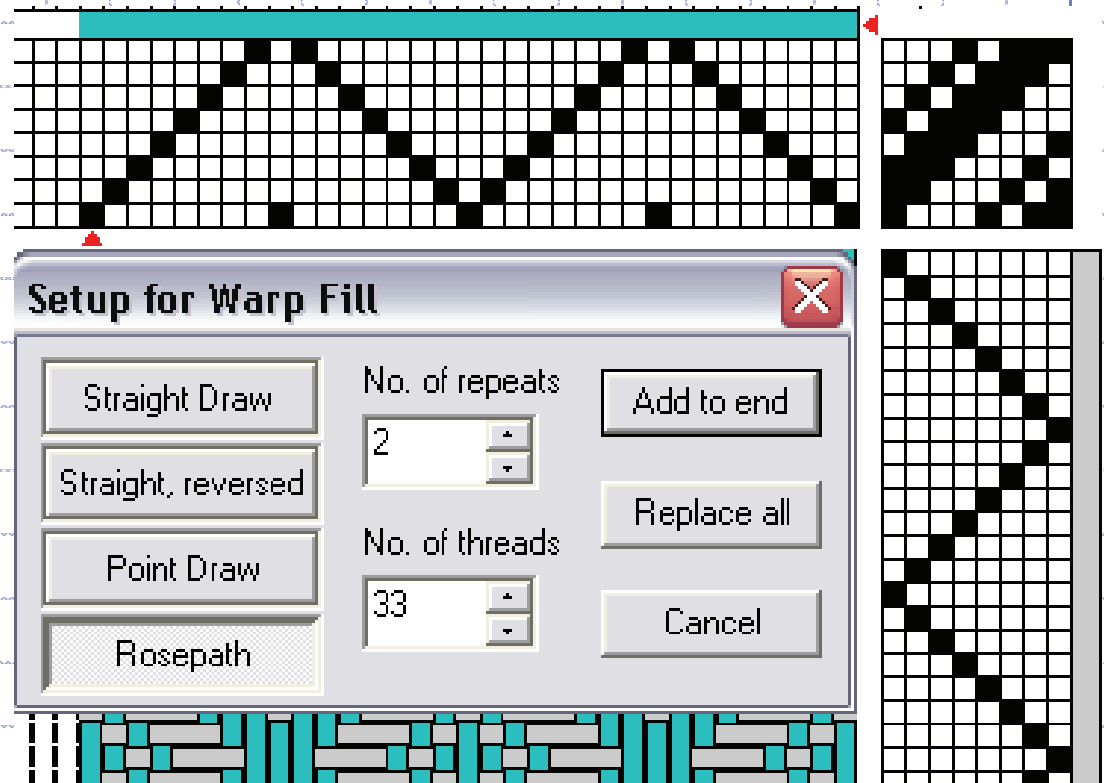


Fiberworks Bronze/Silver

c. Fill

Four choices are available and it shows the number of ends/picks for the number of repeats

Warp/Weft → Fill



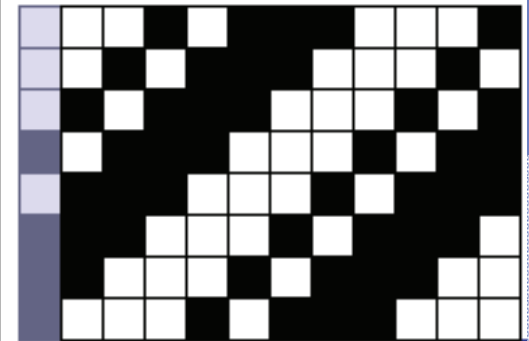
Fiberworks Bronze/Silver

d. Tie-ups

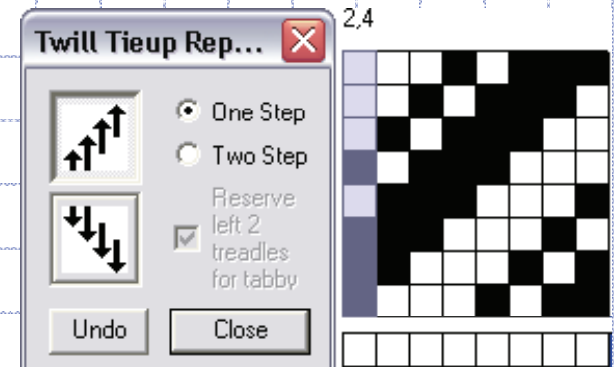
Enter first treadle,
Tieup → Twill Repeat

Silver only

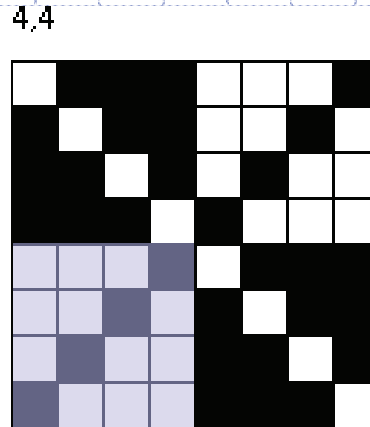
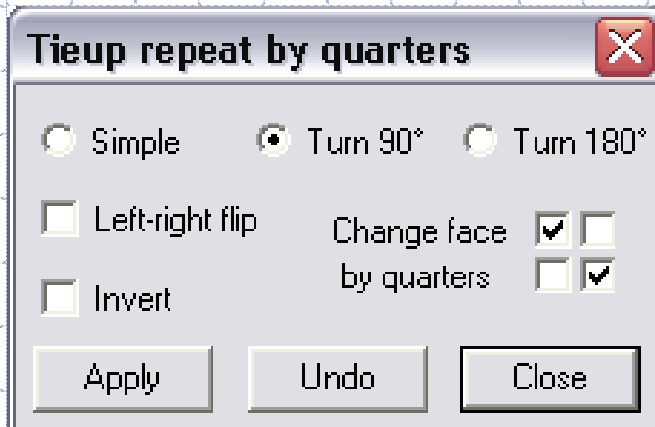
Enter first quarter,
Tieup → Repeat by Quarters



Silver ↗



Bronze ↗



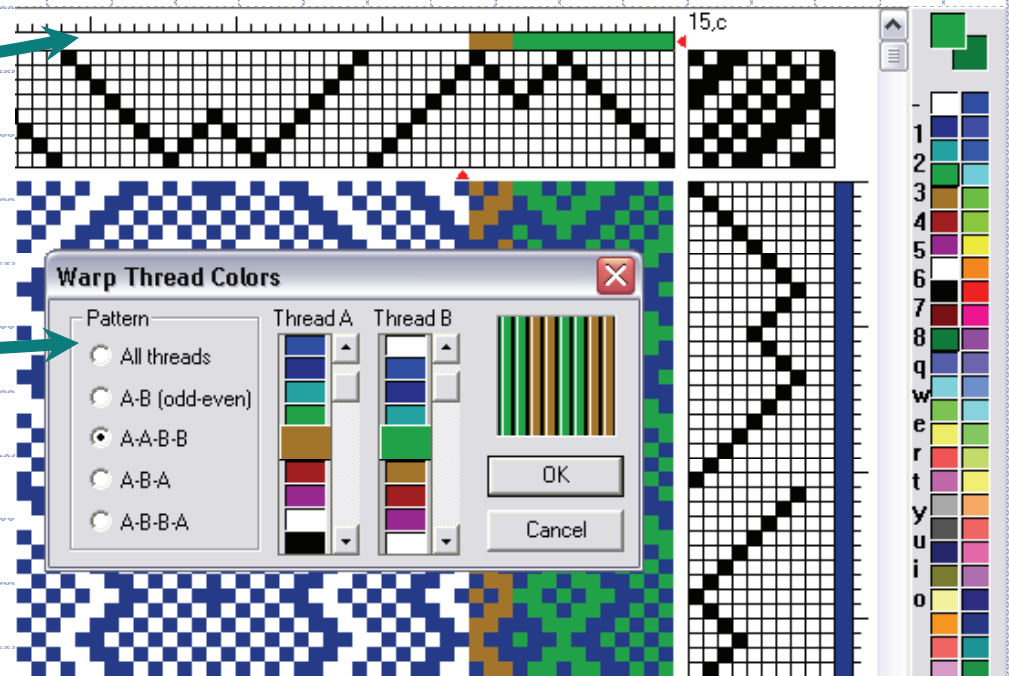
Fiberworks Bronze/Silver

e. Color

Choose a color from the palette and click or click and drag in the color bar to add color or type color number/letter.

From the menus choose warp → colors... and make choices from the box.

Type in the color number or letter. Use Cloth → Change Color Group to move colors to the area to be typed.

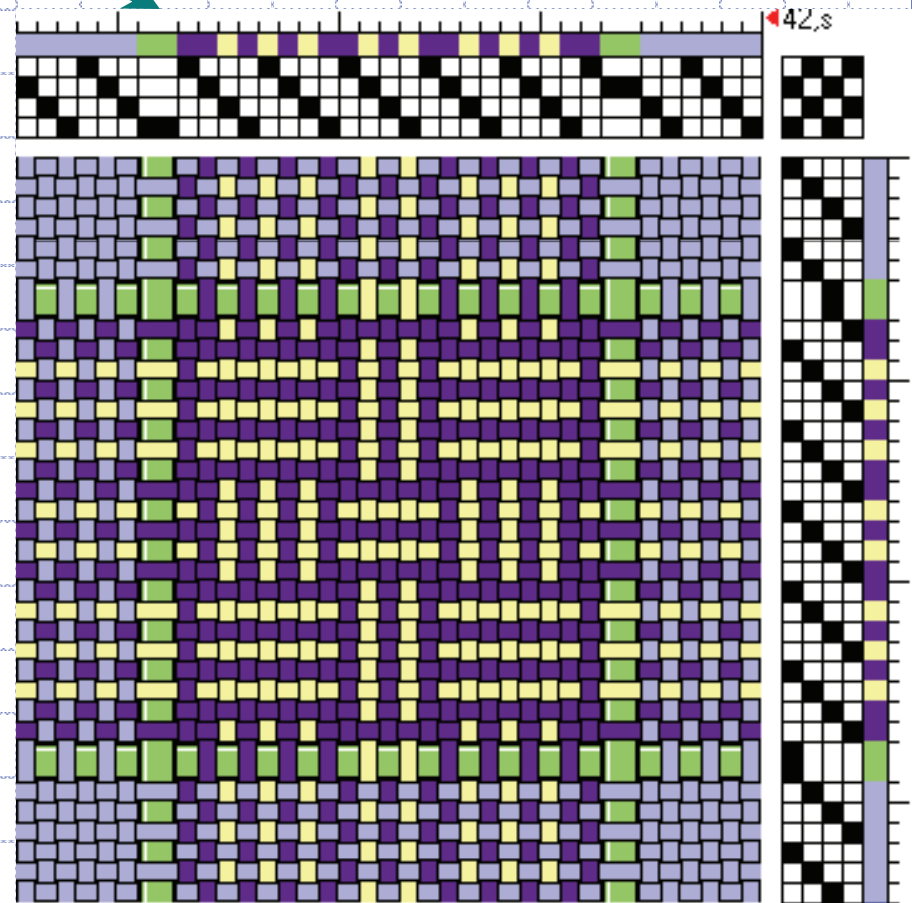


Fiberworks Bronze/Silver

f. Thickness

Click in the thickness bar to double the size of a thread.

Type numbers from 1 to 16 (see page 4) in the thickness bar.



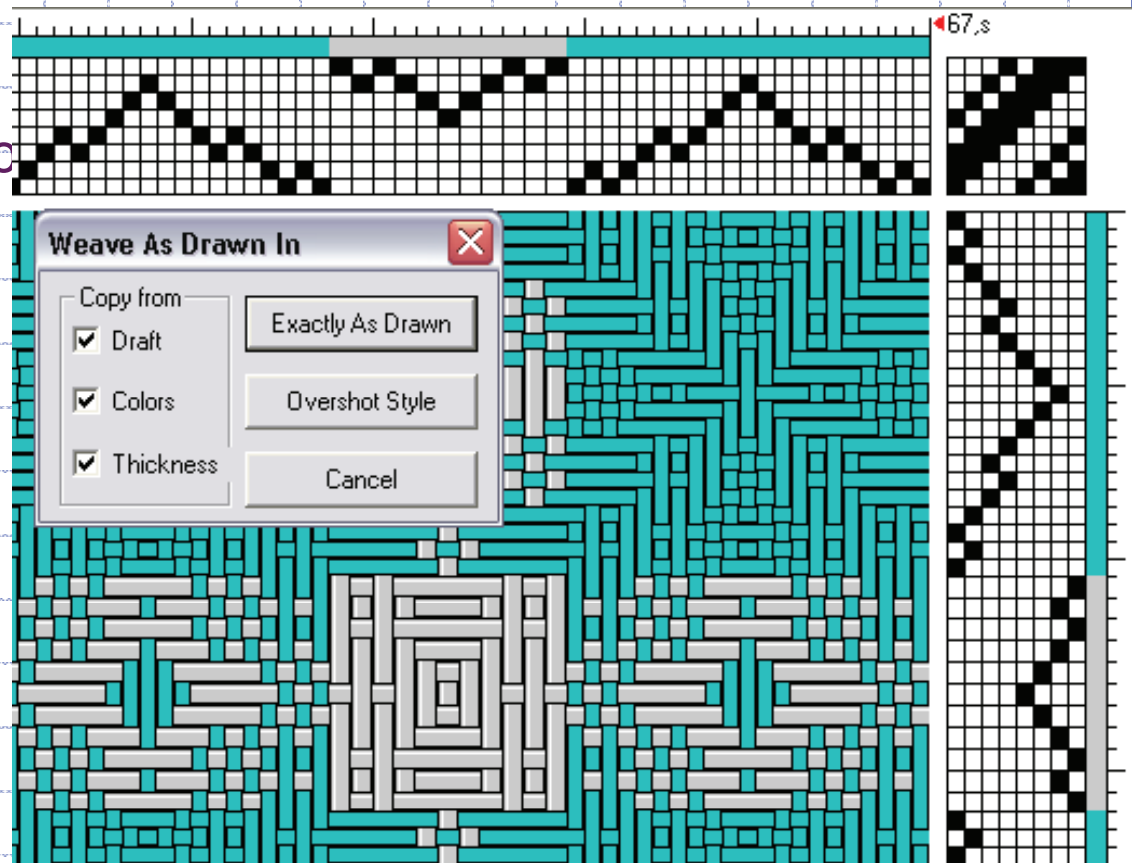
Fiberworks Bronze/Silver

g. Weave As Drawn In

Weft → Weave As Drawn In...

Choose from window
which items to copy, you
from one to all three.

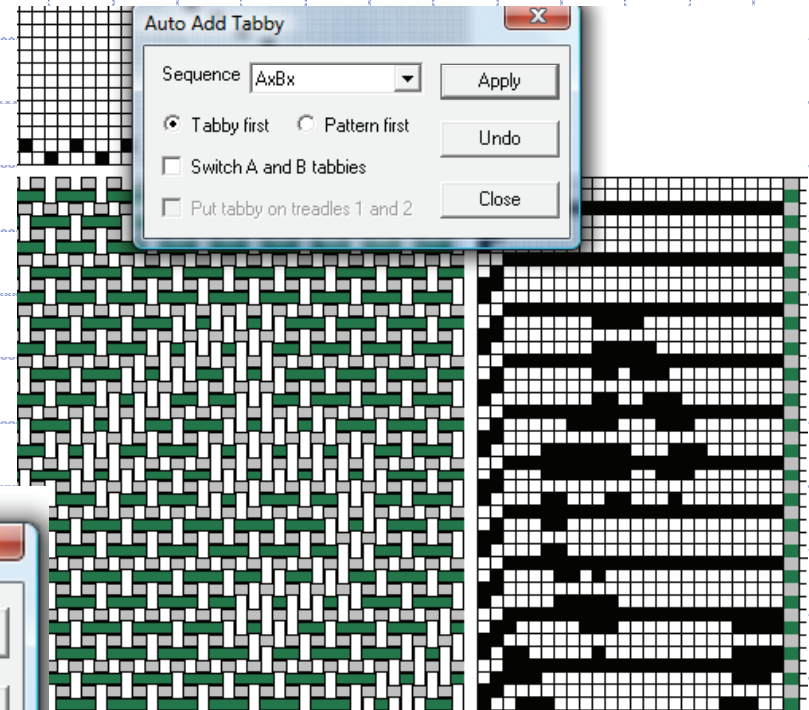
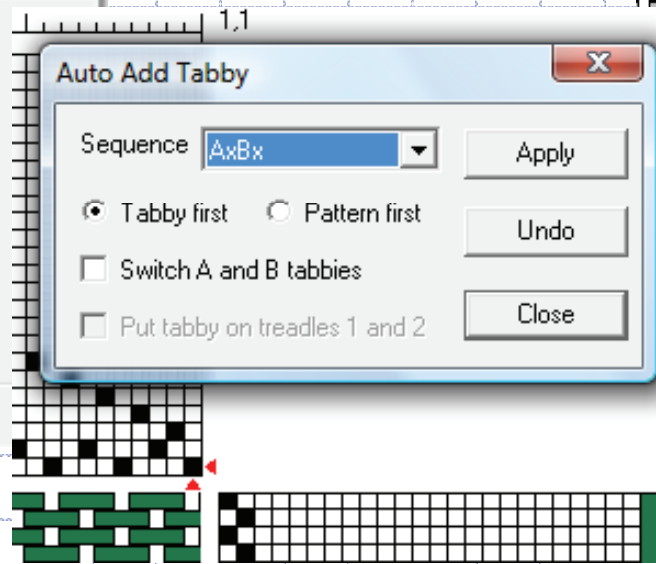
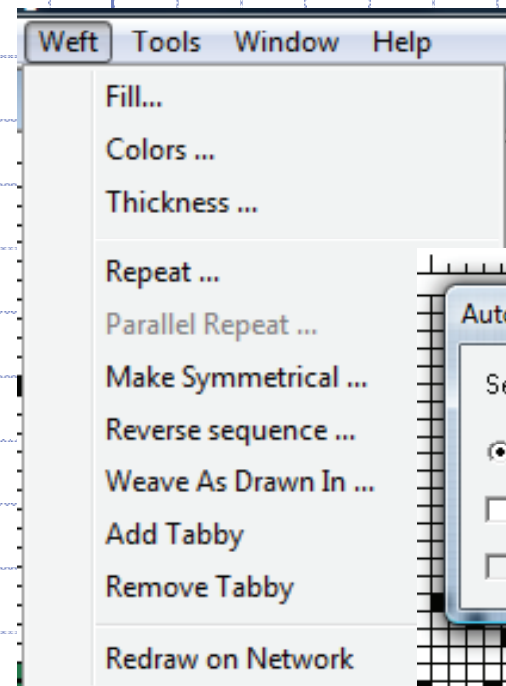
Overshot style does a
block weave as drawn in



Fiberworks Bronze/Silver

h. Add Tabby

Add tabby to a completed pattern either in tie-up or liftplan using Weft → Add Tabby



Note: You can also Remove Tabby