

Drafting with Weaving Software

Enter Data

◆ Enter Data

- Threading, treadling, tie-up, dents, and color.

Questions:

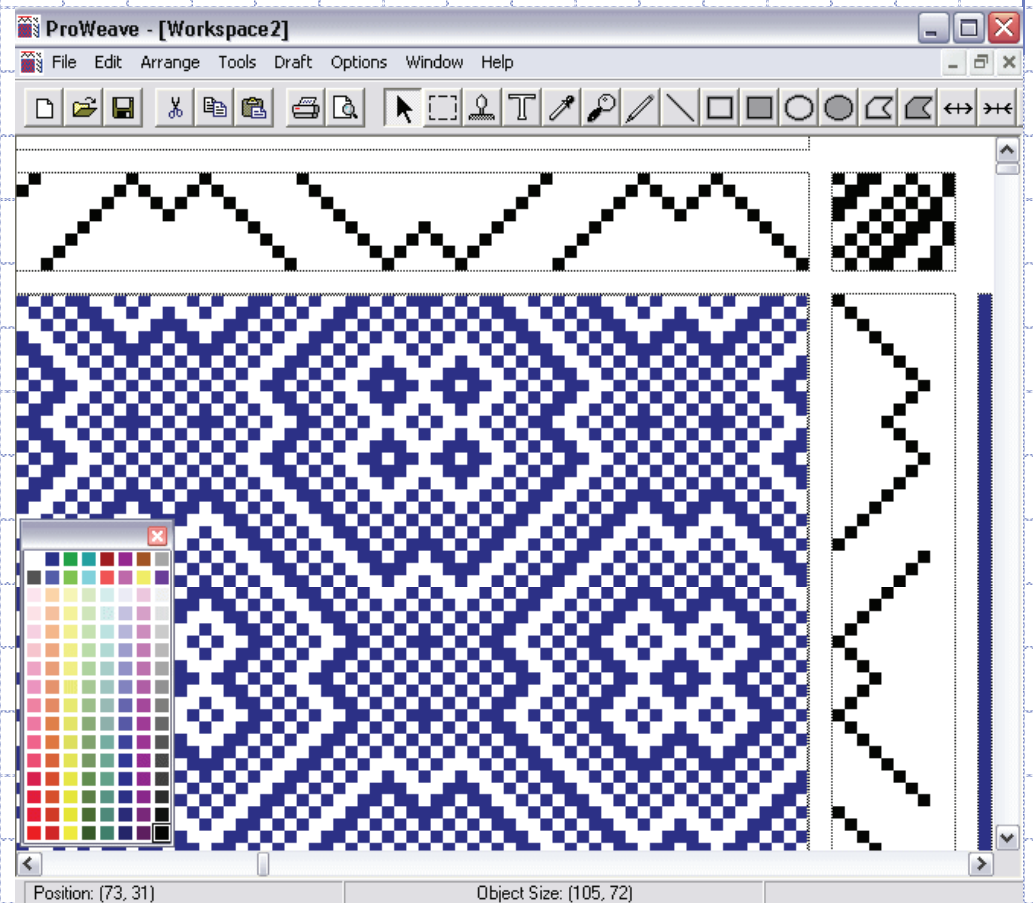
- ◆ Insert/ Delete keys will insert/delete ends, picks, treadles. (Yes/No)
- ◆ Blank ends, picks, and treadles are allowed. (Yes/No)

ProWeave

2. Enter Data

- a. Keyboard: Use Notepad or Simple Text
- b. Line Draw
- c. New Draft
- d. Twill Bank
- e. Tie-up
- f. Color
- g. Symbolize
- h. Treadle as Drawn In
- i. Add Tabby

Insert/Delete No
Blanks OK



ProWeave

a. Keyboard: Use Notepad or Simple Text

Type shaft or treadle numbers. Save each as text.

Threading: 1 2 4 3 2 1 4 3 1 2 3 4 1 2 3 4

Tie-up:

1 2

2 3

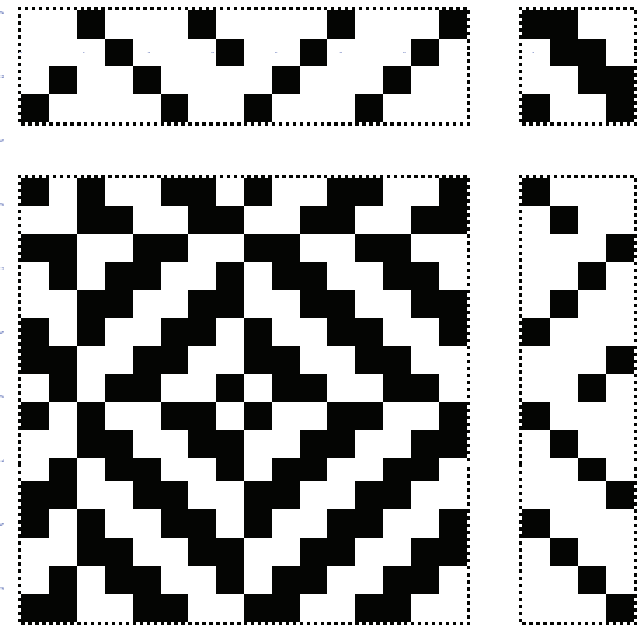
3 4

4 1

File → Import from text,

Select both, CTRL m to make draft

Treadling default is as drawn in.



ProWeave

b. Enter Data

Line Draw

a. Options → Direction Lock

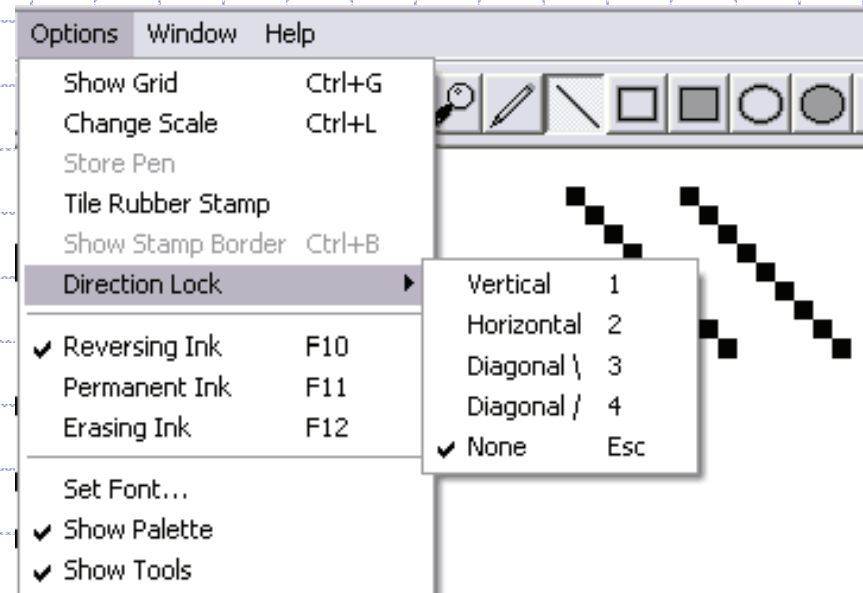
Use numbers to determine line direction

Press Esc when done.

b. Use line draw tool and click and drag for a line between two points.

Create and save a workspace of draft parts. They can quickly be assembled into

a new draft. Threadings can be rotated to become treadlings.



ProWeave

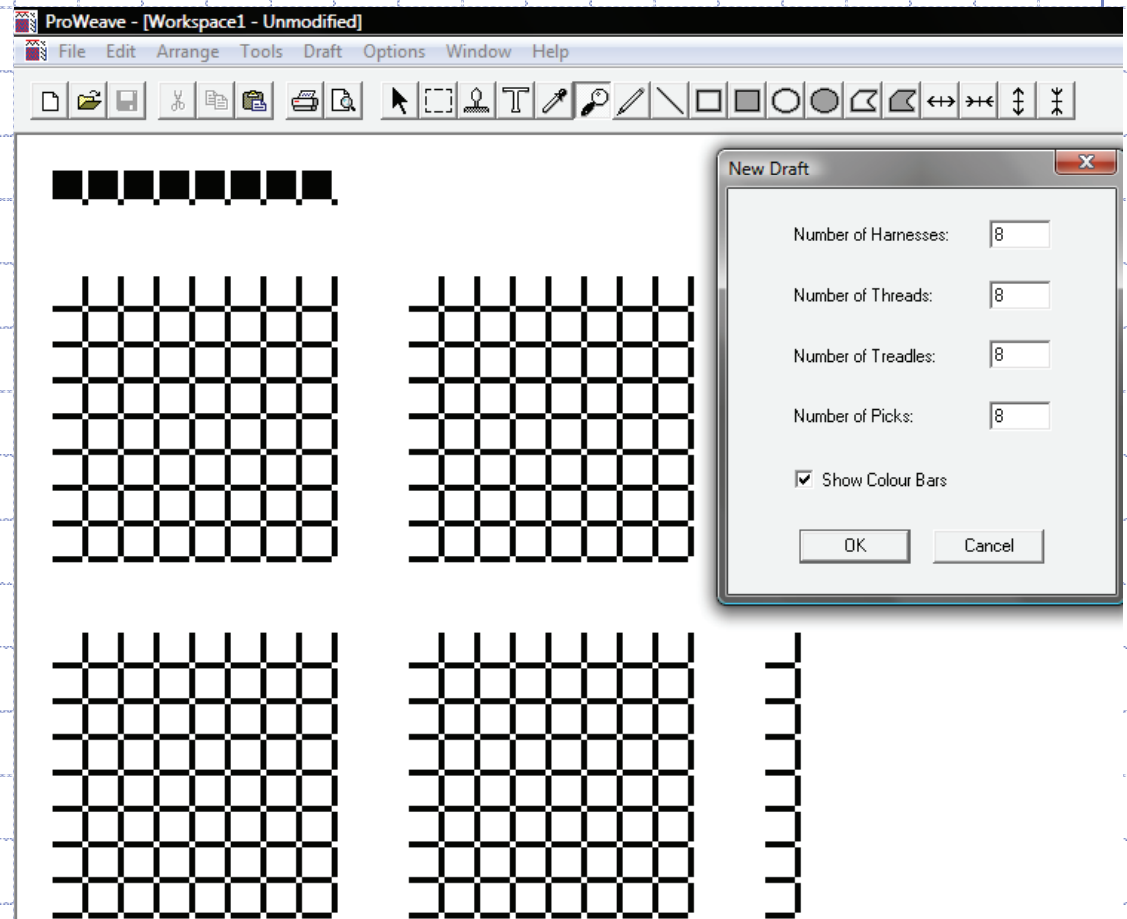
c. New Draft

A grid for a new draft is available

Draft → New Draft

This will let you enter
a draft of known size
easily.

Set the number of shafts,
treadles, ends, picks
and color bars.



ProWeave

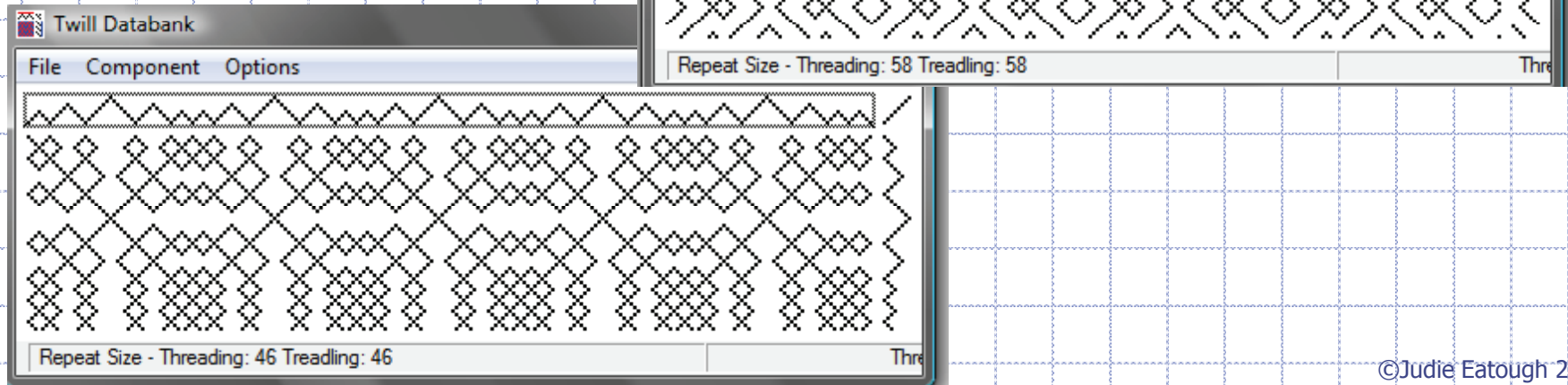
d. Twill Databank

For quick drafts use the data in the Twill Databank

Use Tools → Twill Databank

Set the number of shafts and choose the component you want.

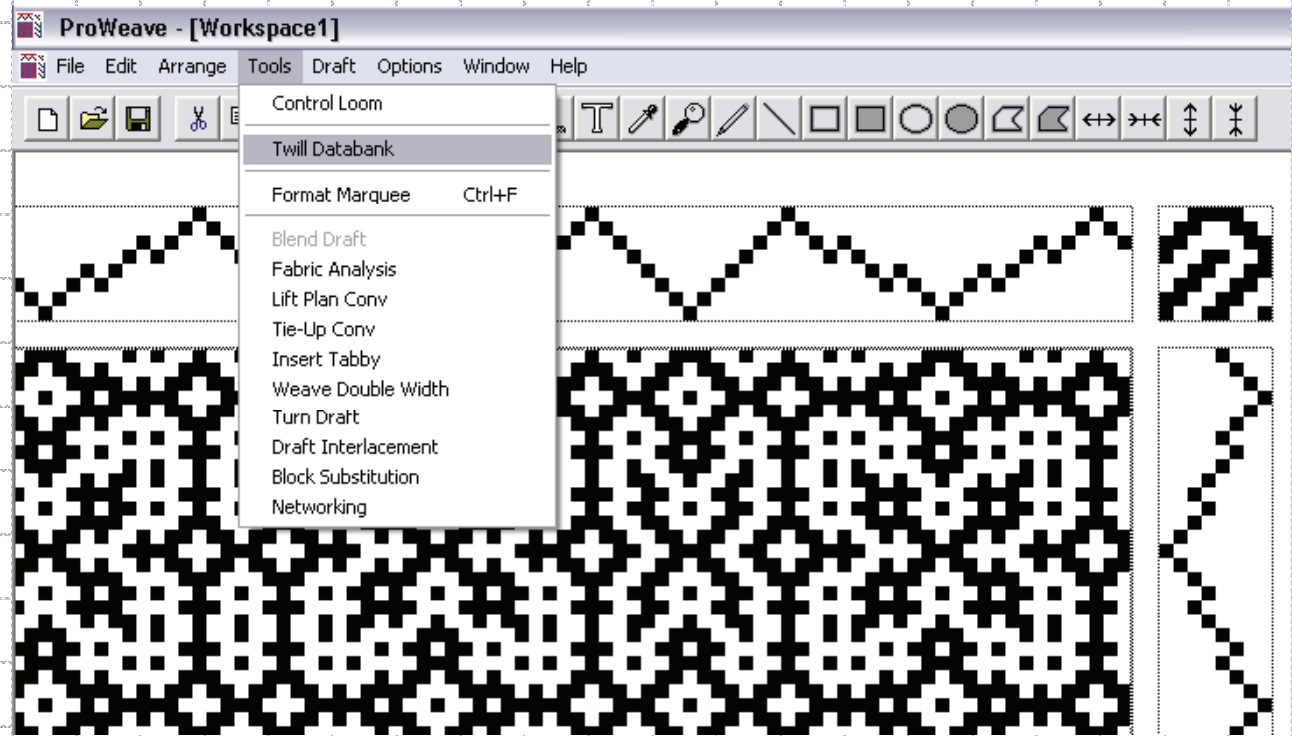
Then use the page down key to scroll through many threading/treading drafts.



ProWeave e. Tieup

Tieup

Use drawing tools or
Use Twill Databank



ProWeave f. Color

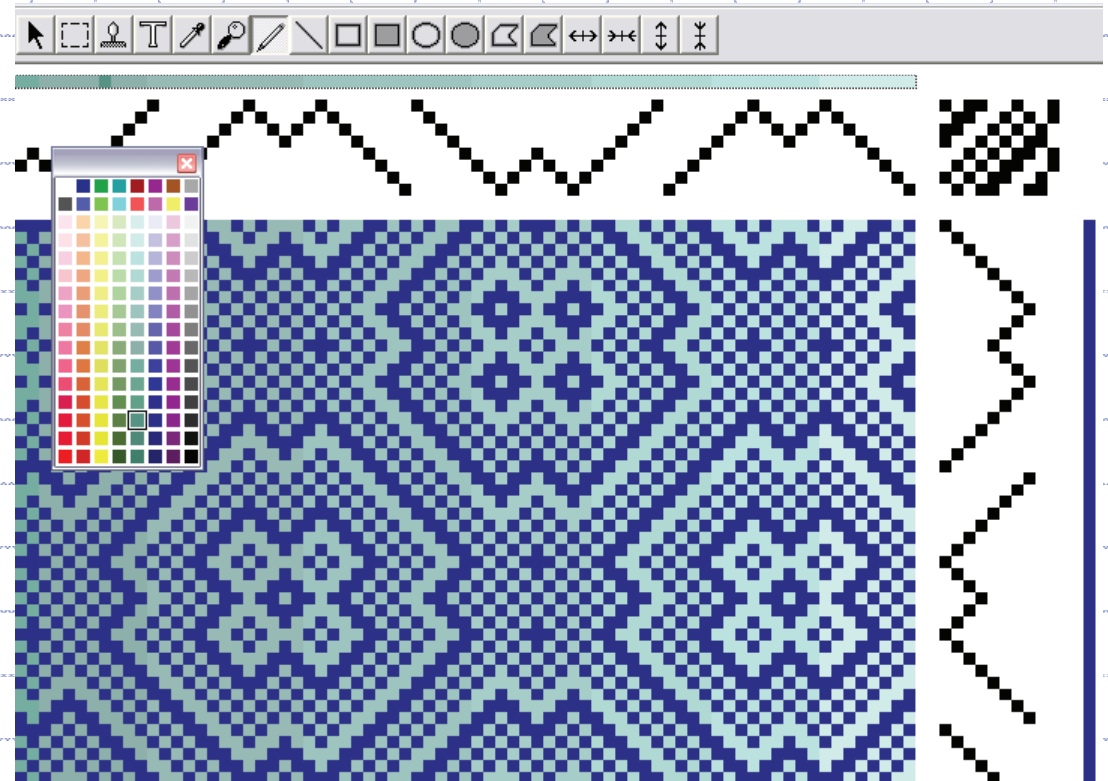
Draft → Use Colorbars

Solid colors:

Drag existing color
onto new color in the
palette

Multicolor:

Use pen tool and
palette

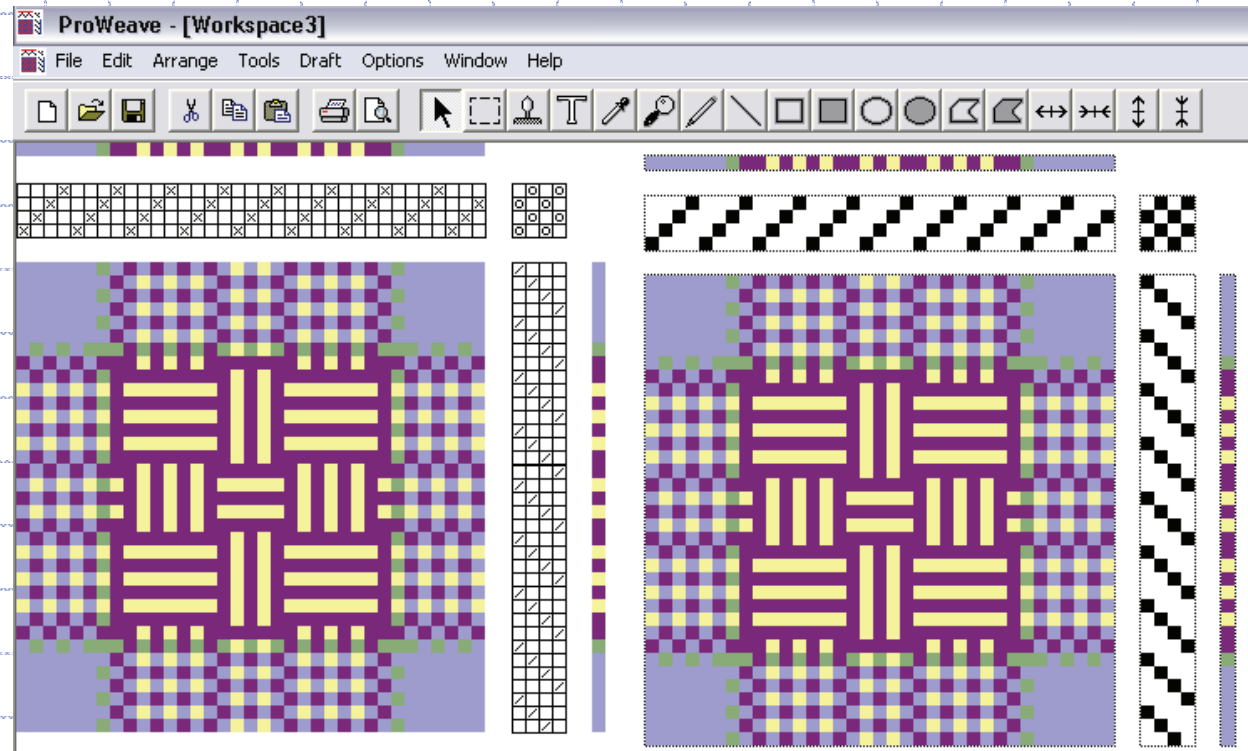


ProWeave g. Symbols

Symbols

With draft selected, Draft → Symbolize

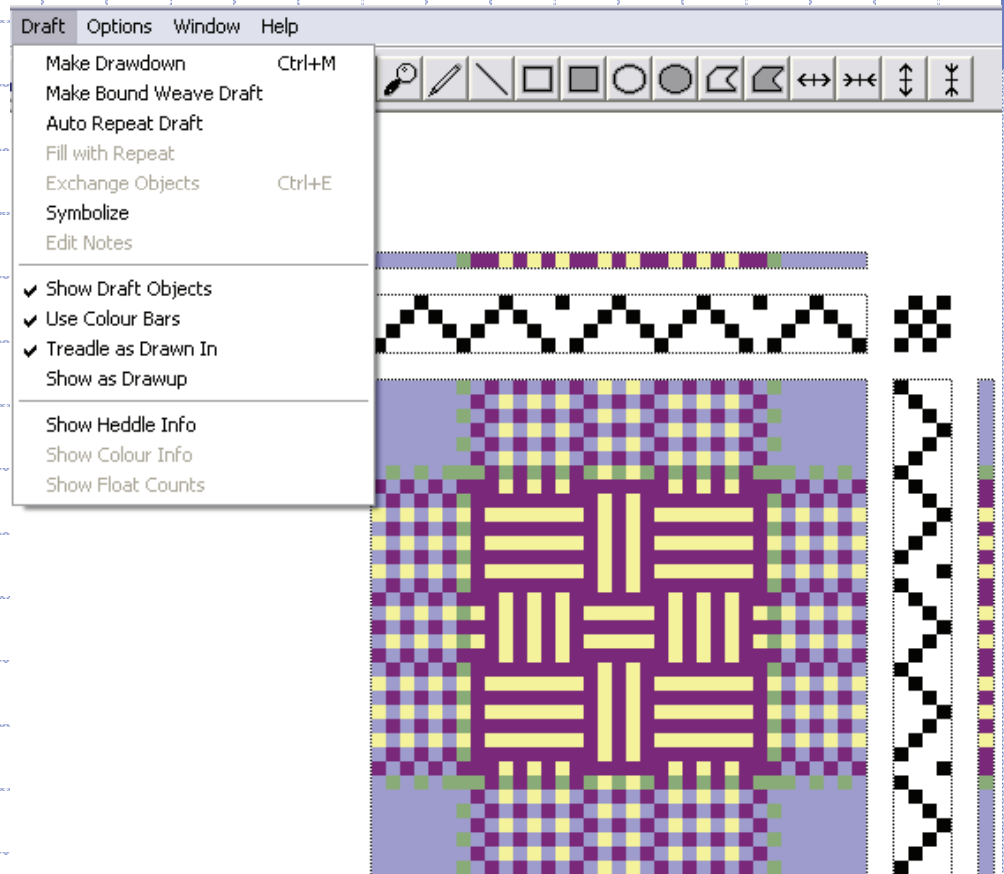
A symbolized draft can
not be edited.
It can be viewed
or printed.



ProWeave

h. Treadle as Drawn In

Draft → Treadle as Drawn In
Or duplicate and rotate
threading and/or color bar



ProWeave

i. Add Tabby

Tools → Insert Tabby

If tabby treadles do not already exist, the program will insert treadles for them. After inserting the tabby you must enter the tabby treadle data. You can also insert tabby in liftplan mode.

