

# Drafting with Weaving Software

## Enter Data

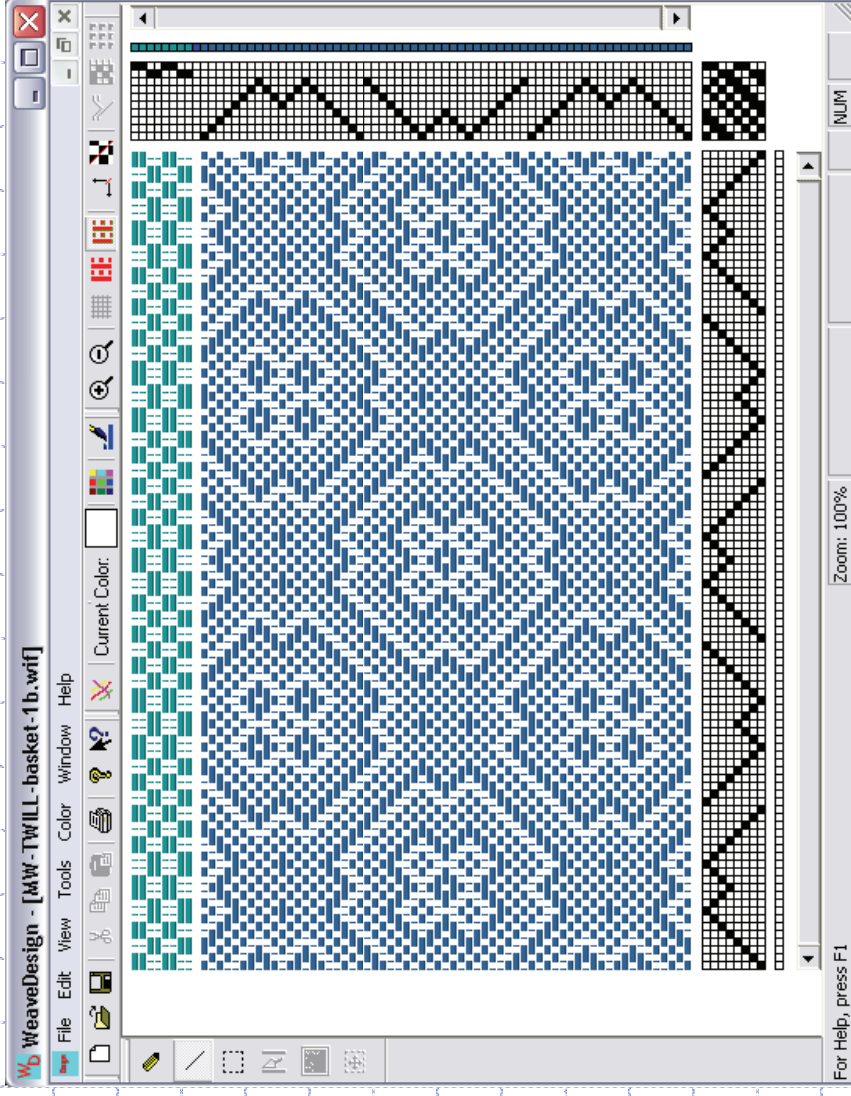
- ◆ Enter Data
  - Threading, treading, tie-up, dents, and color.

### Questions:

- ◆ Insert/ Delete keys will insert/delete ends, picks, treads. (Yes/No)
- ◆ Blank ends, picks, and treads are allowed. (Yes/No)

# WeaveDesign Enter Data

- a. Freehand
- b. Line mode
- c. Color



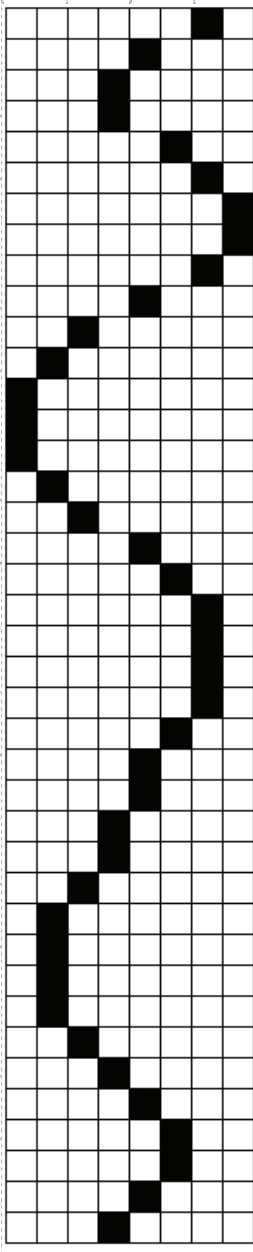
Insert/Delete No  
Blanks OK

# WeaveDesign

## a. Freehand

Freehand drawing

Use pen tool to click and drag freehand

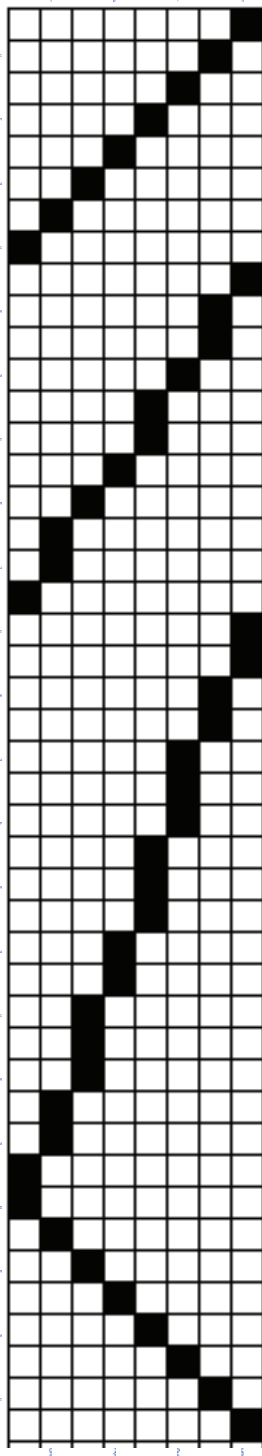


# WeaveDesign

## b. Line

### Line draw

Use line tool to click and drag a line between two points.



# WeaveDesign

## C. Enter Data

### Color

Color tool window where you can pick or modify a color for your draft



Palette shows colors in draft