

Drafting with Weaving Software

Enter Data

◆ Enter Data

- Threading, treadling, tie-up, dents, and color.

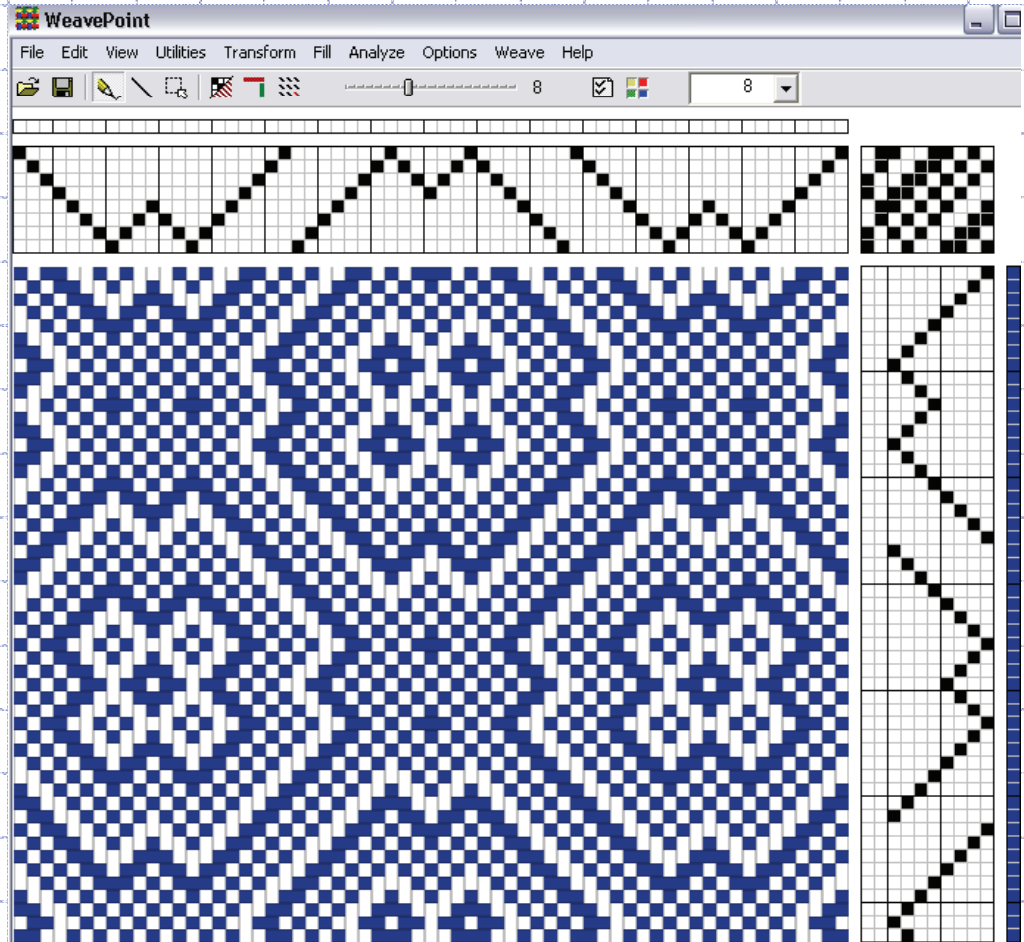
Questions:

- ◆ Insert/ Delete keys will insert/delete ends, picks, treadles. (Yes/No)
- ◆ Blank ends, picks, and treadles are allowed. (Yes/No)

WeavePoint Enter Data

- a. Line/Freehand
- b. Keyboard
- c. Numeric
- d. Fill
- e. Color
- f. Treadle as Drawn In
- g. Add Tabby

Insert Yes/Delete with confirm
Blanks OK



WeavePoint

a. Line and Freehand

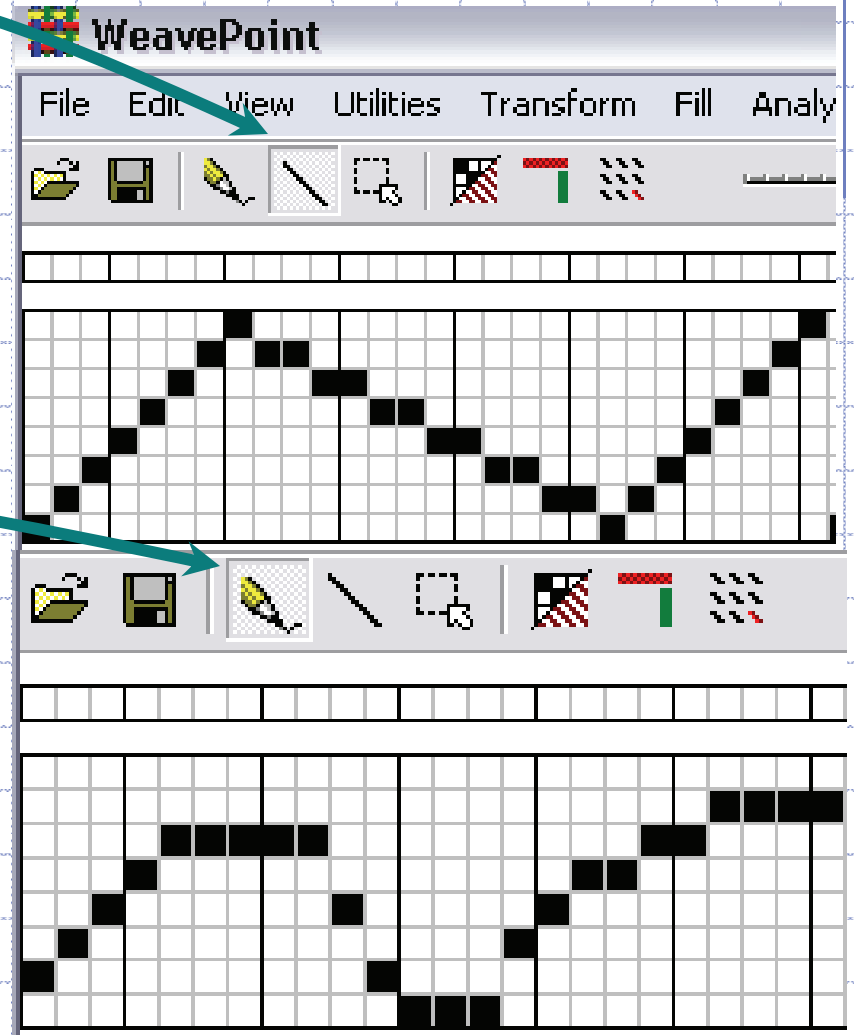
Line

Use line tool to drag a line between two points.

Freehand

Use pencil tool to drag a freehand curve.

Quickly change between tools using the s key.



WeavePoint

b. Keyboard

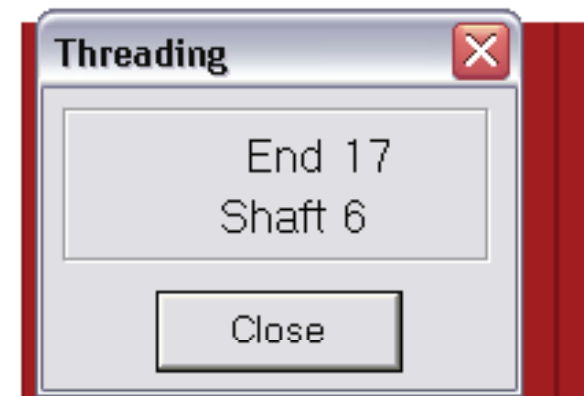
Edit → Keyboard Input

Type shafts/treadles 1—24 directly from the keyboard.

Keyboard layout has an easy visual mnemonic.

2 is shaft 2, w is shaft 12, and s is shaft 22.

Popup window shows a quick visual typing check.



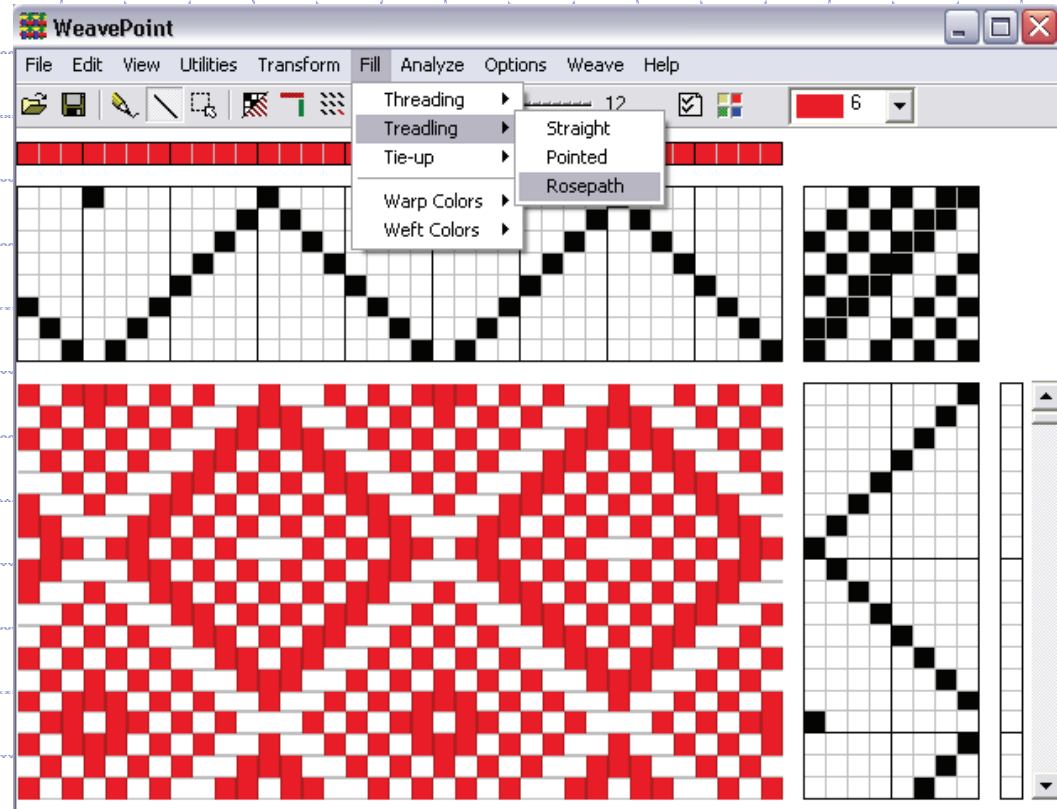
WeavePoint

d. Fill

Fill → Threading, Treading or Tie-up

Straight, pointed,
and rosepath
threadings/
treadlings.

Tieup: twill
variations, satin,
and plain weave.

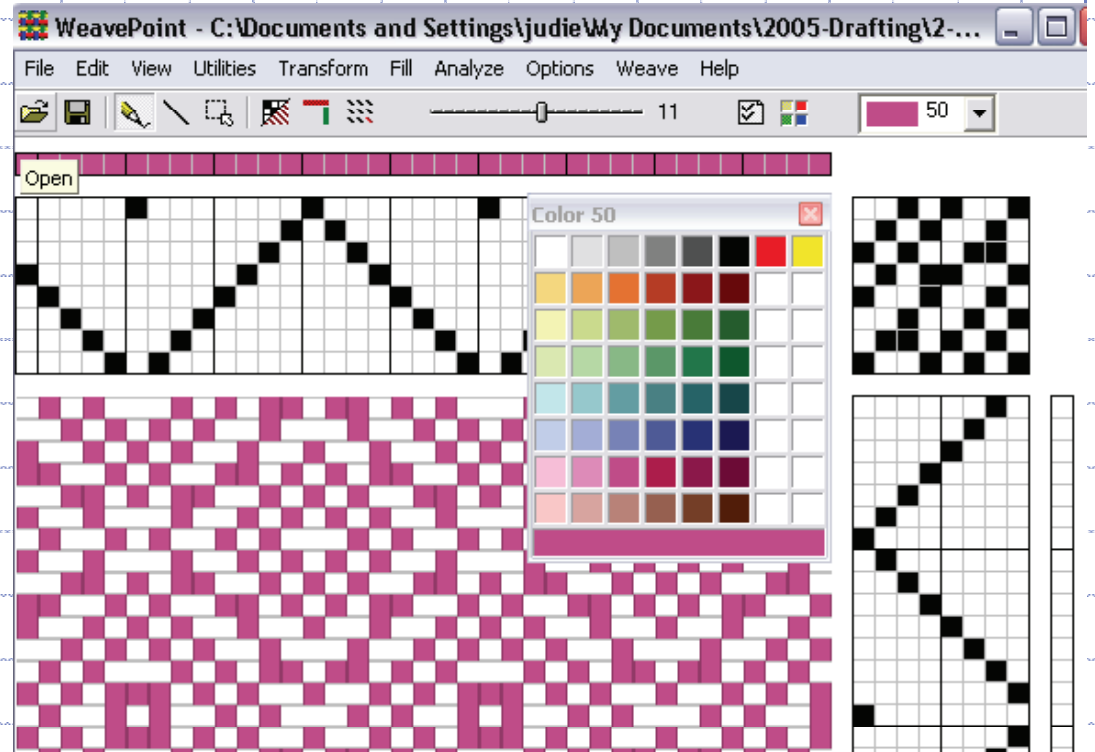


WeavePoint e. Color

Pencil tool

Use pencil tool, color bar, and color palette to add color to draft.

Fill → Warp or Weft Colors



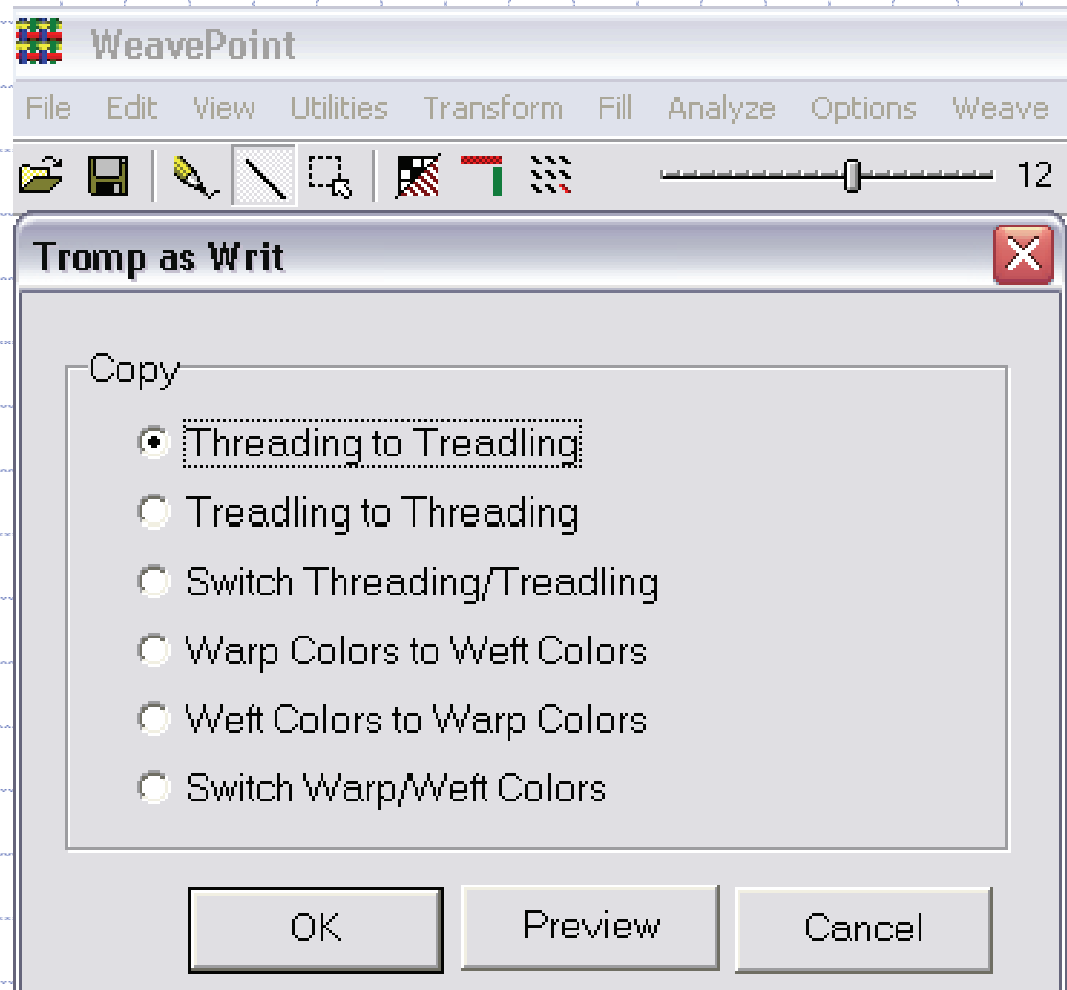
When using fill colors, the A, B, a, b, colors refer to specific colors on your current color pallet. See colors 0, 1, and 5. You can adjust these colors by opening the color pallet and double clicking on the color. Or Utilities → Edit Colors...

WeavePoint

f. Tromp as Writ

Utilities → Tromp as Writ

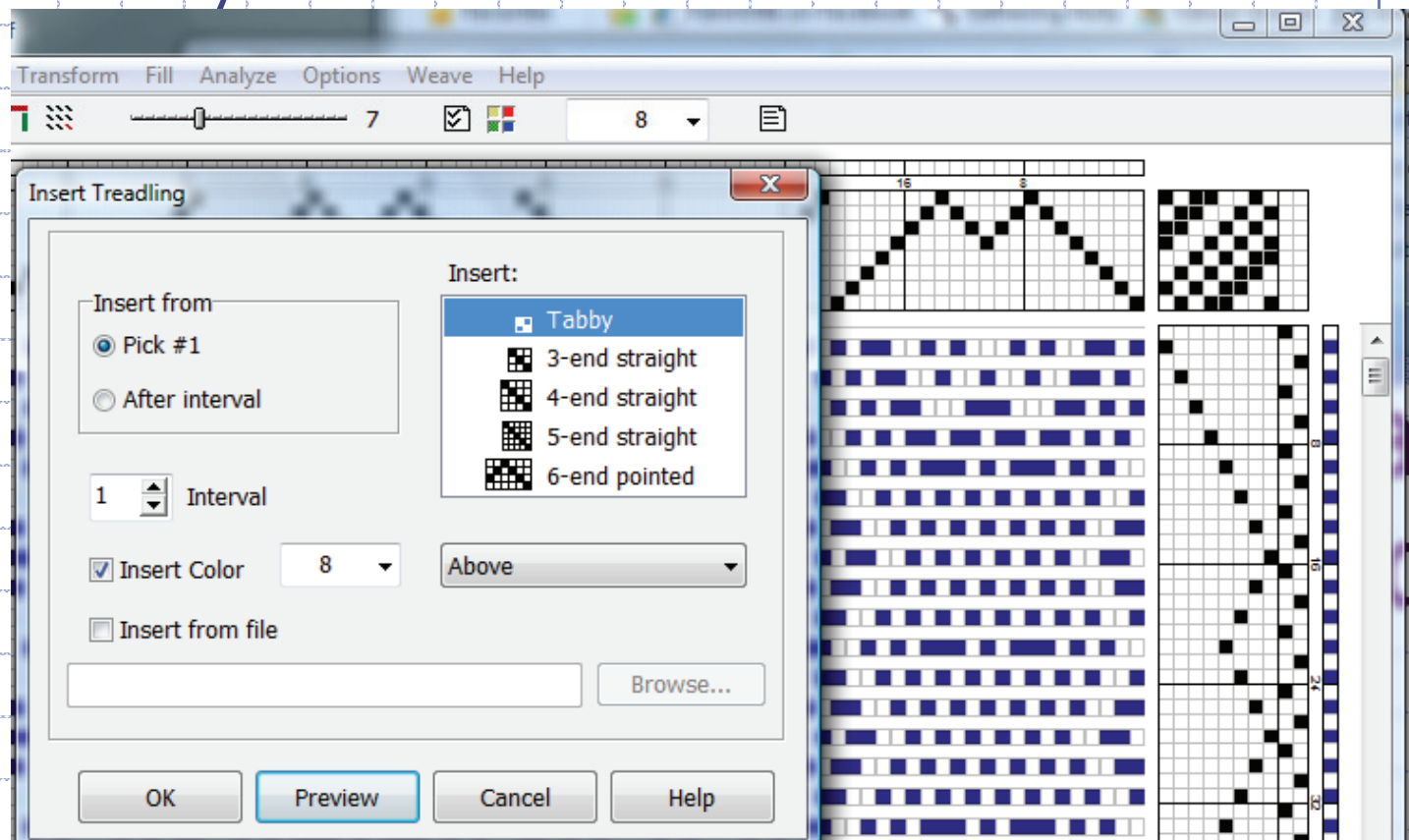
Many choices for
threading/ treading
and colors.



WeavePoint

g. Add Tabby

Transform → Insert Treading
Add shafts to tabby treadsles.



9 Utilities → Delete → Treadles Use this to delete tabby