

# Drafting with Weaving Software Preferences

## ◆ Preferences

- Configure program defaults
- Record Notes/Records
- Calculations
- Yarn Database

- ◆ Choose number of shafts, treadles, etc.
- ◆ Choose draft layout, symbols, view, magnification
- ◆ Miscellaneous settings
- ◆ Project records and calculations
- ◆ Yarn Databases with fiber, color, sett, cost, and/or vendor

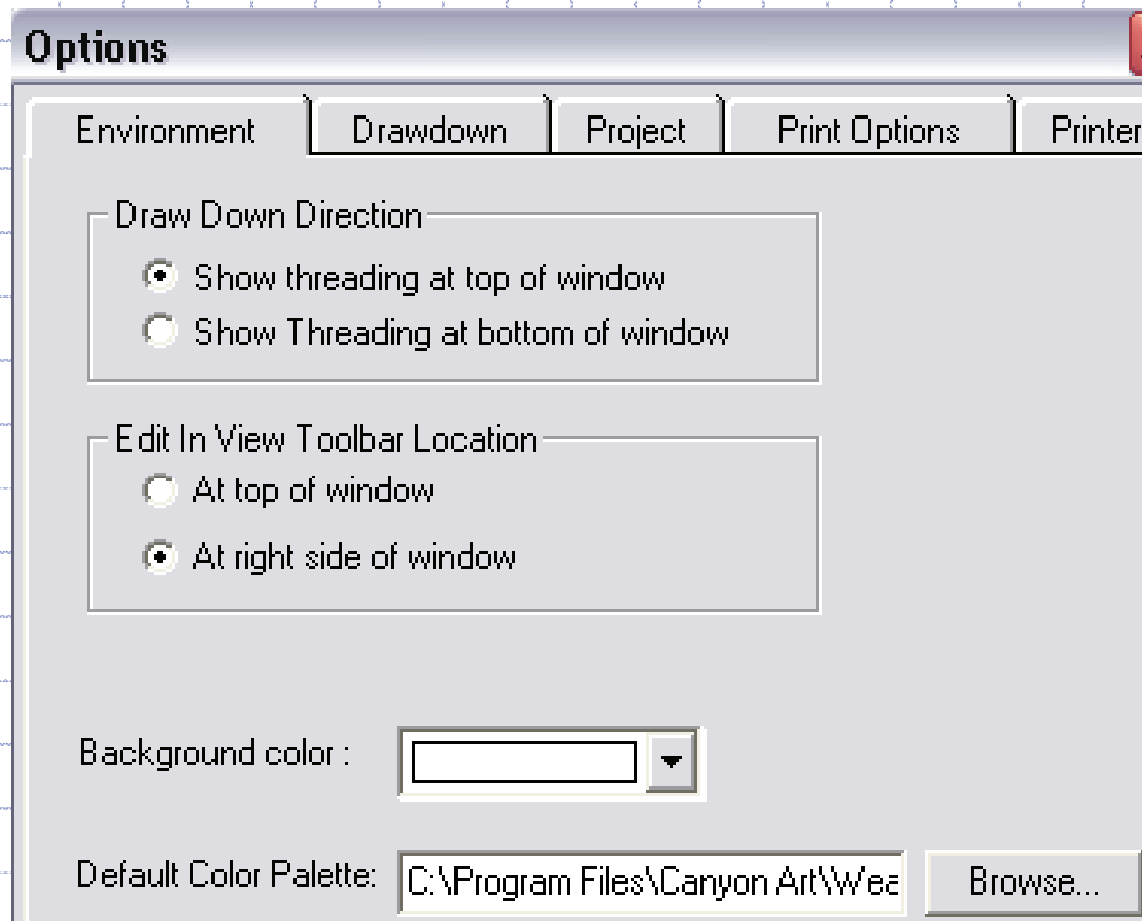
# WeaveIt Basic/Pro

## Preferences

- a. Environment      Project → Options
- b. Drawdown      Project → Options
- c. Project      Project → Options
- d. Print Options      Project → Options
- e. Notes/Calculations      Project → Project Setup...
- f. Yarn      Project → Yarn Selection
- g. Calculate Sett      Project → Calculate Sett

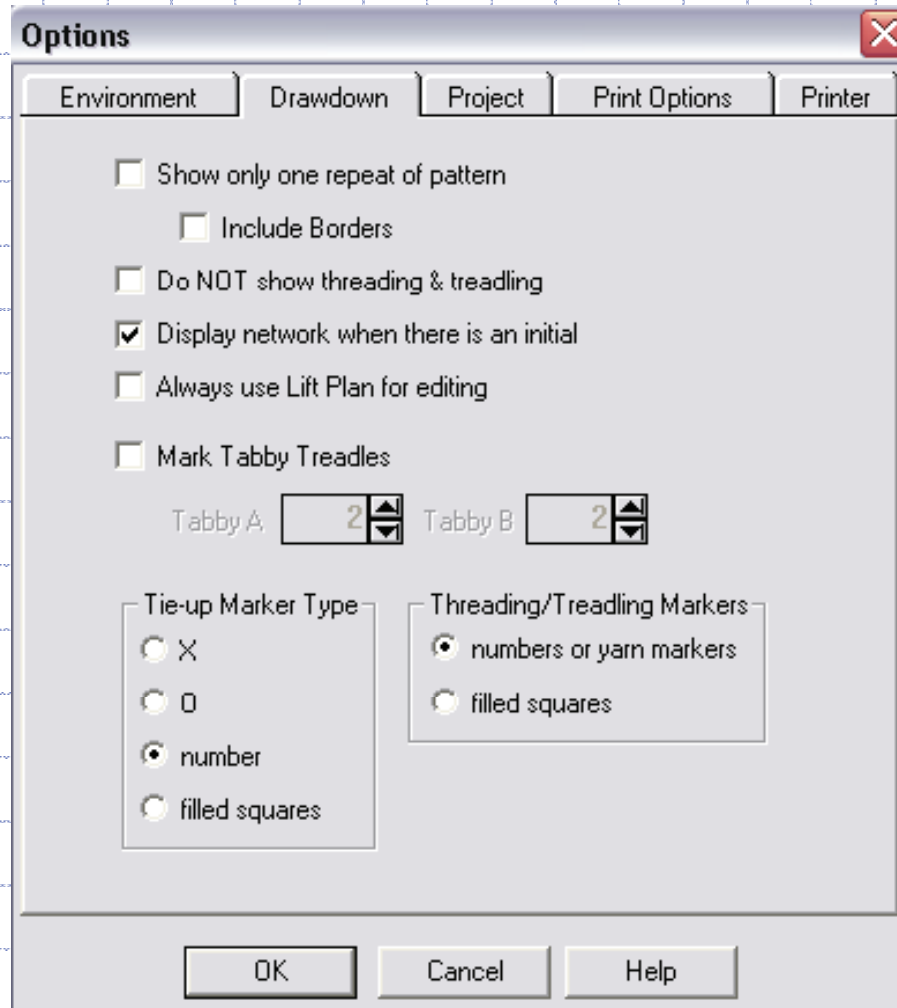
# WeaveIt Basic/Pro

## a. Environment

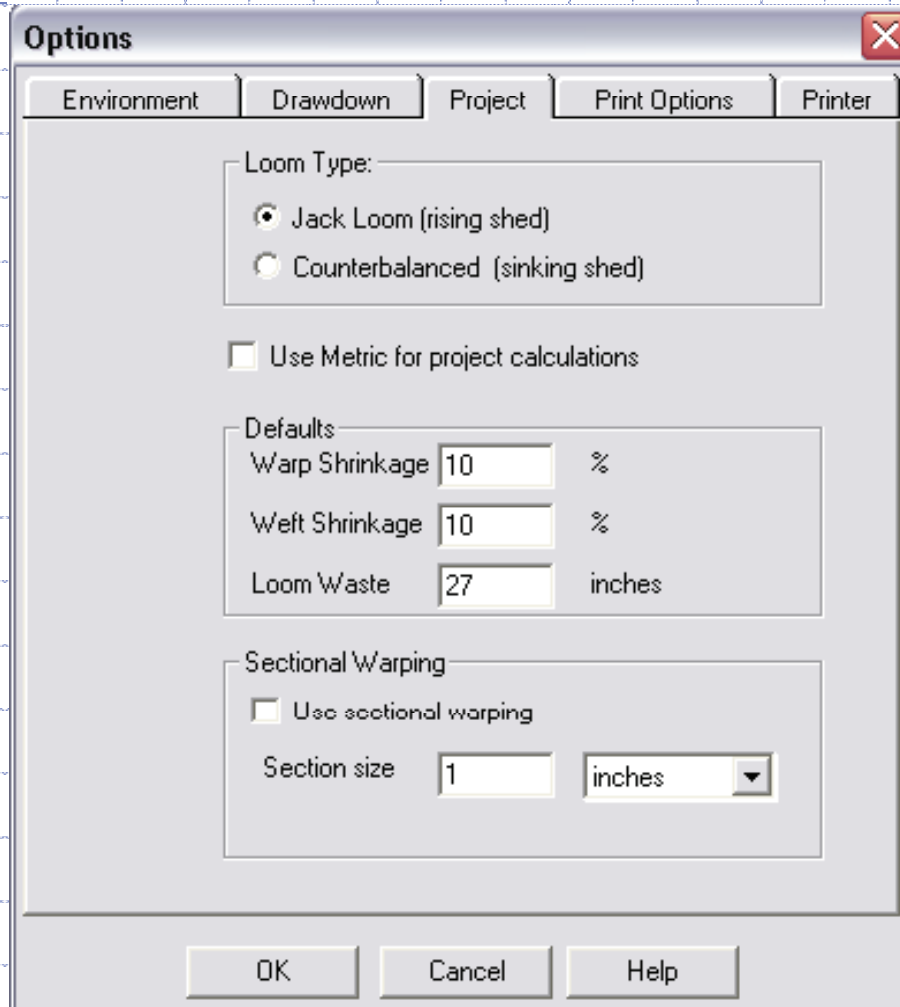


# WeaveIt Basic/Pro

## b. Drawdown



# WeaveIt Basic/Pro c. Project



# WeaveIt Basic/Pro

## d. Print Options

Environment | Drawdown | Project | **Print Options** | Printer

Radio5 : in inches

Left	<input type="text" value="0.50"/>	Right	<input type="text" value="0.50"/>
Top	<input type="text" value="0.50"/>	Bottom	<input type="text" value="0.50"/>

Project Info  Draw Emty Grid

Weave Pattern Font Size   Threading Only

Drawdown showing thread interlacement

Preferable Width

<input checked="" type="radio"/> Automatic	<input type="radio"/> 1/3 Page	<input type="radio"/> 2/3 Page
<input type="radio"/> 1/2 page	<input type="radio"/> Full Page	

Draw down without interlacement Zoom Size

Inset in pattern if possible

Full Page

Partial Page

Width  inches Height  inches

Lift Plan (Peg Plan)  Sectional Warp Calculations

# WeaveIt Basic/Pro

## e. Notes/Calculations

**Project Information** [X]

Date:

Project Name:

Shrinkage: Warp  % Weft  %

Loom waste:  inches

Sett:  warp ends per inch

P.P.I.:  picks per inch

Add floating selvages

Use Pattern to Calculate Lengths

Number of items:

Finished length of warp:  yards

Length of warp on loom:  yards

Use Pattern to Calculate Widths

Finished width of warp:  inches

Width of warp on loom:  inches

Notes:

OK  
Cancel  
Help

7 Project → Project Setup...

# WeaveIt Basic/Pro

## f. Yarn Selection

**Yarn List**

List of Yarns for this project:

* L	thin	
* D	thick	

\* Currently used in draw down Remove Unused Yarns

New Add Replace Remove

**Selected Yarn**

Yarn Color: Pattern Marker:

Yarn Name:  Yarn Type:

Individual Yarn Sett:

Vendor Name:

Vendor Yarn ID:  Color Number:

Cost:

per pound \$  yards/lb:

per skein \$  yards/skein:

OK Cancel Clear List Help



# WeaveIt Basic/Pro

## g. Calculate Sett

**Compute Sett** [X]

Step 1: Firmness is determined by the threading draft

Number of warp threads in one repeat

Number of intersections of weft threads

Step 2: Determine the yarns thickness

Wrapping Method Maximum Sett

Wrap yarn for 1" on a ruler.  
Enter the number of wraps:

Ashenhurst Method

Enter Yards per pound:

Step 3: Allow for purpose. Select a percentage of the maximum sett.

▾

THE RESULTING SETT