

Drafting with Weaving Software Preferences

◆ Preferences

- Configure program defaults
- Record Notes/Records
- Calculations
- Yarn Database

- ◆ Choose number of shafts, treadles, etc.
- ◆ Choose draft layout, symbols, view, magnification
- ◆ Miscellaneous settings
- ◆ Project records and calculations
- ◆ Yarn Databases with fiber, color, sett, cost, and/or vendor

WeavePoint

3. Preferences

a. Pattern

Options → Options

b. Loom

Options → Options

c. Style

Options → Options

d. Layout

Options → Options

e. Grid

Options → Options

f. Miscellaneous

Options → Options

g. Notes

Options → Notes

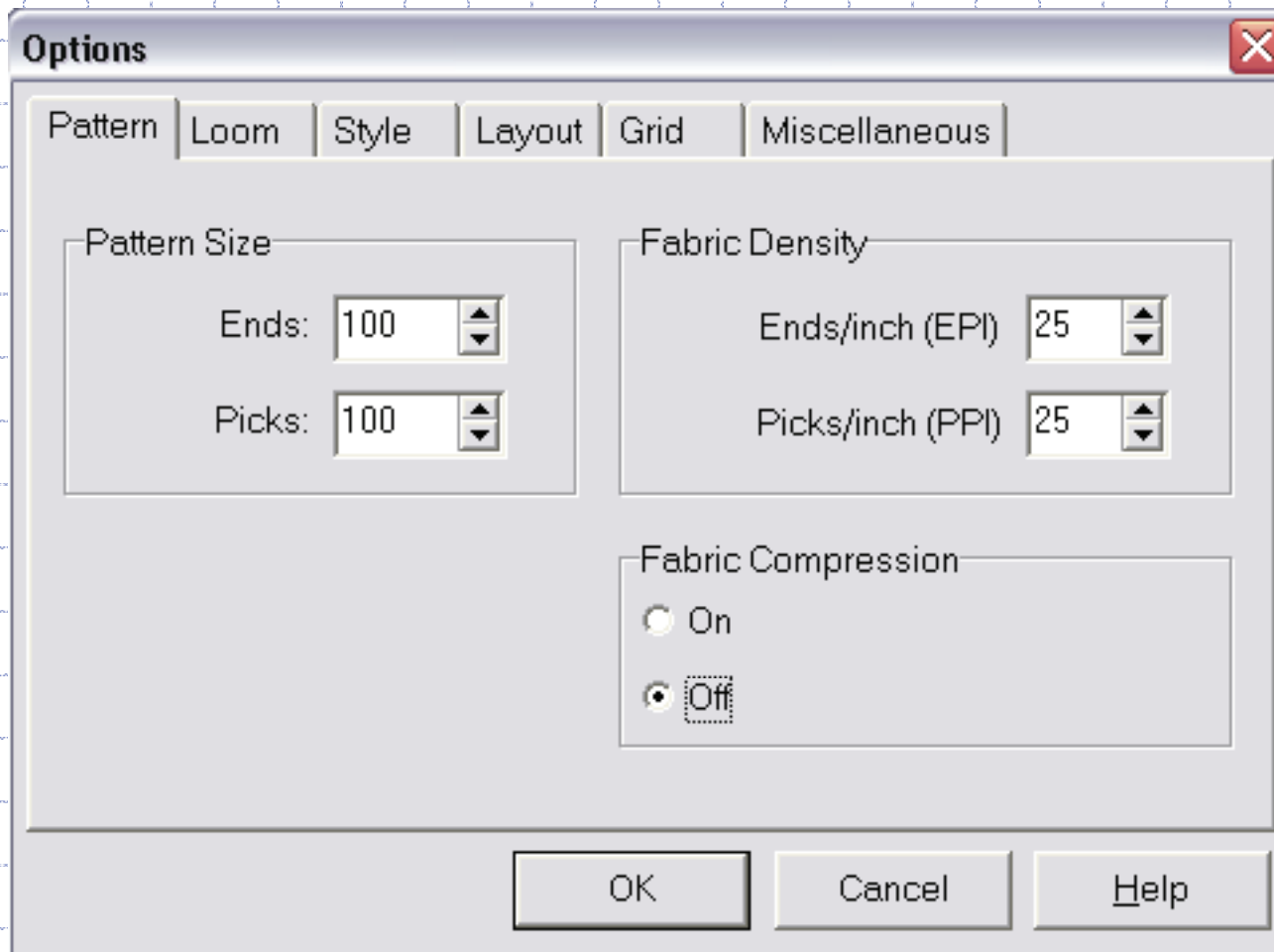
h. Calculations

Options → Project Planner

i. No Yarn Database

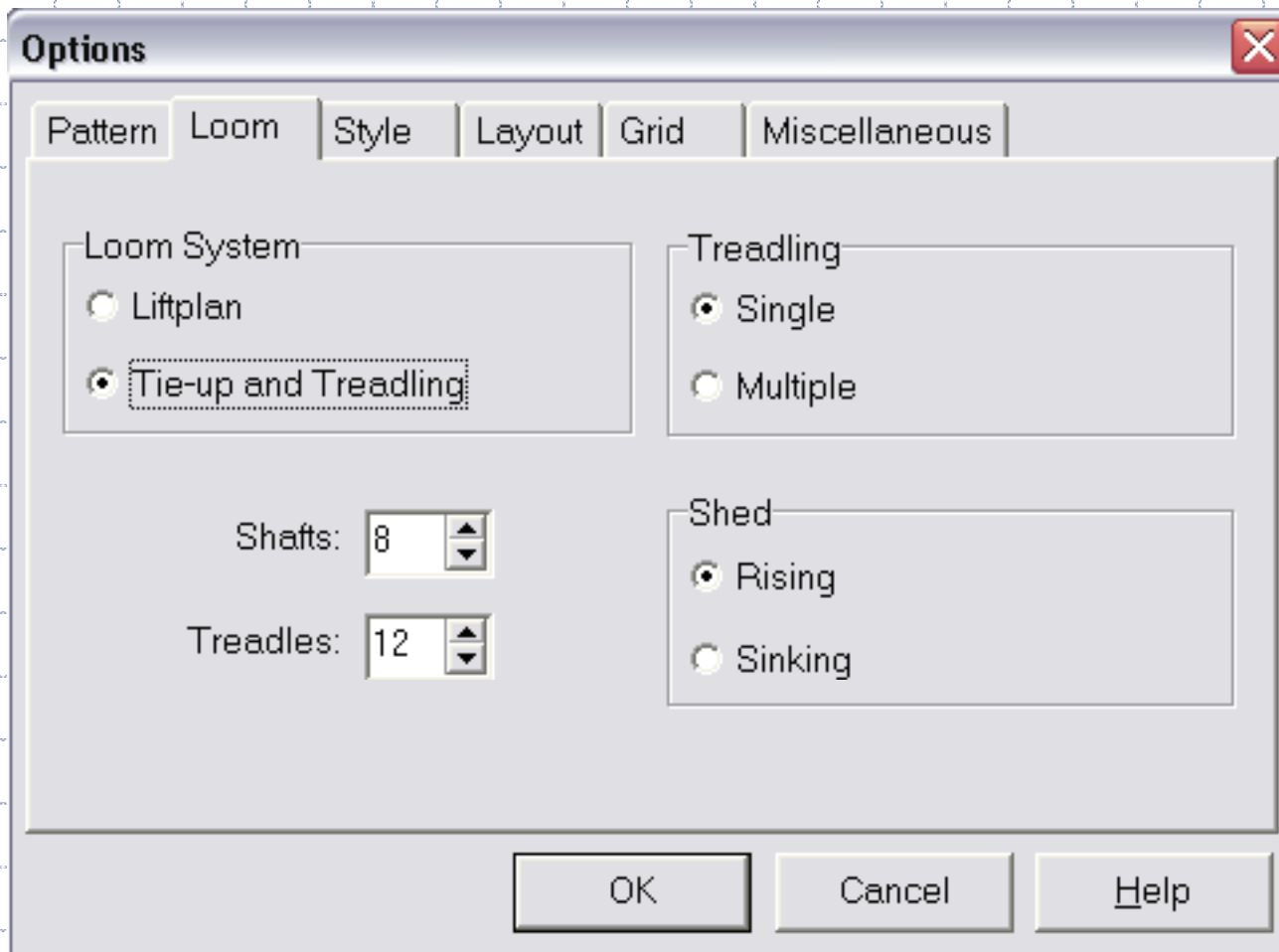
WeavePoint

a. Pattern

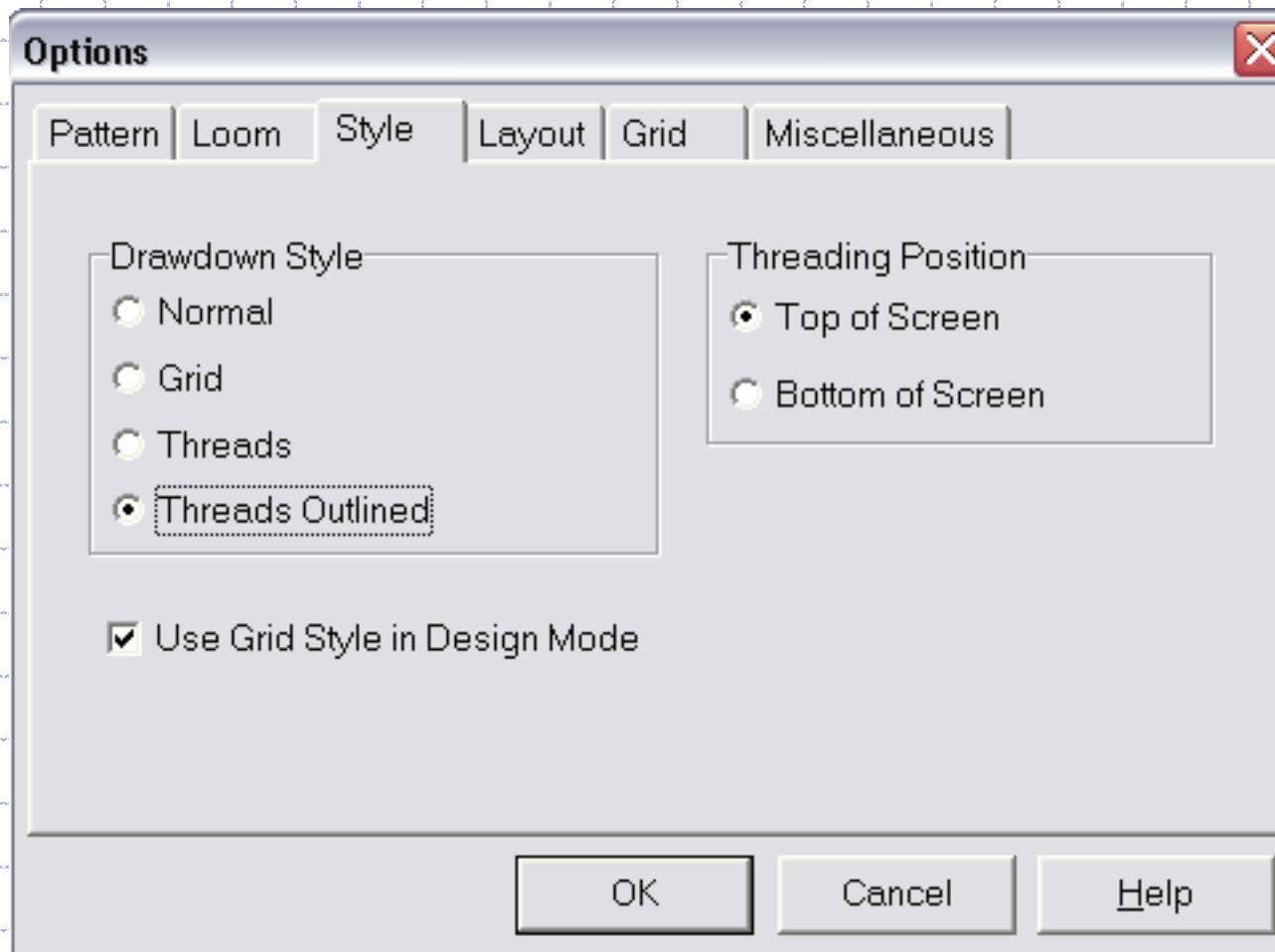


WeavePoint

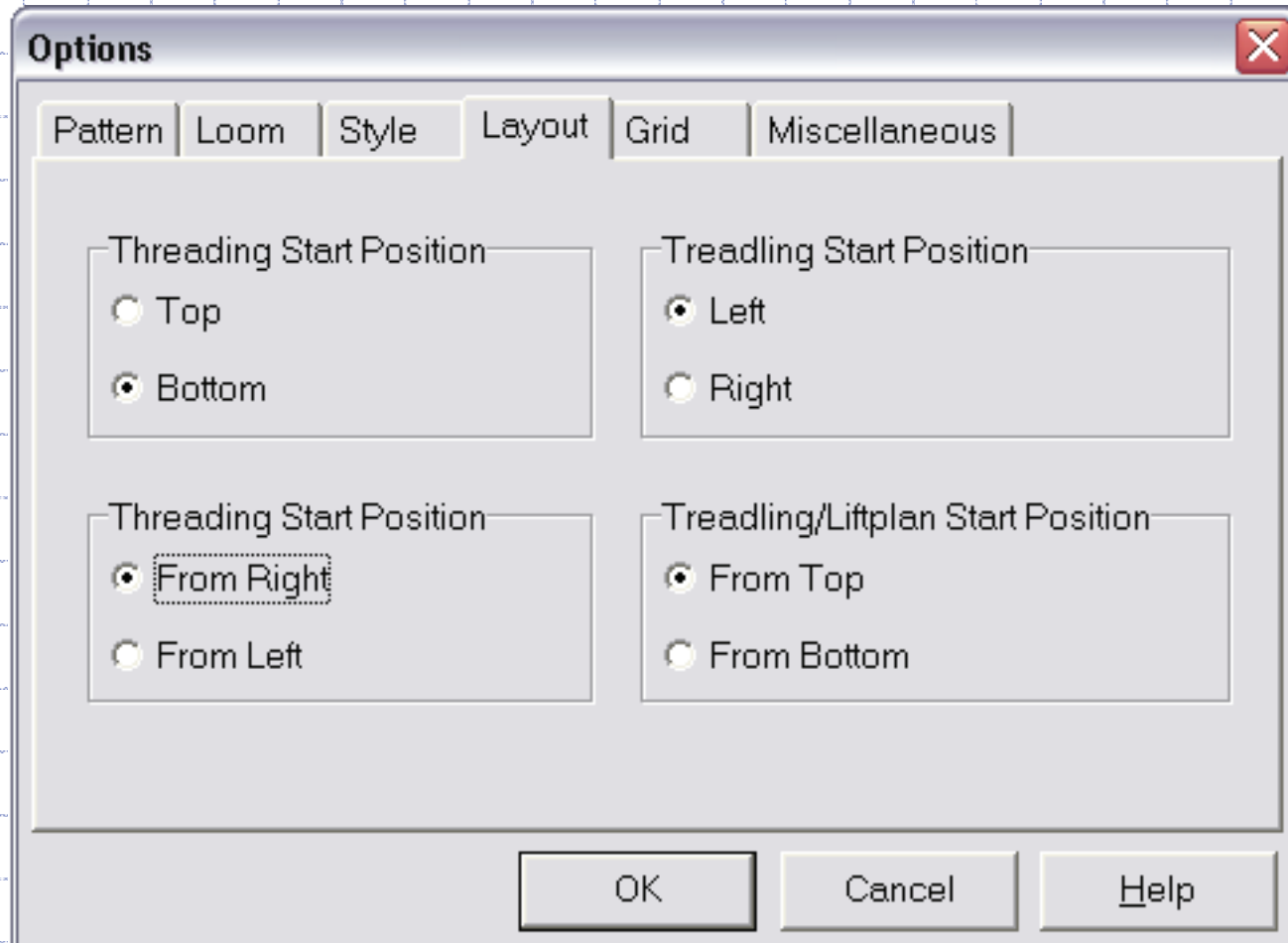
b. Loom



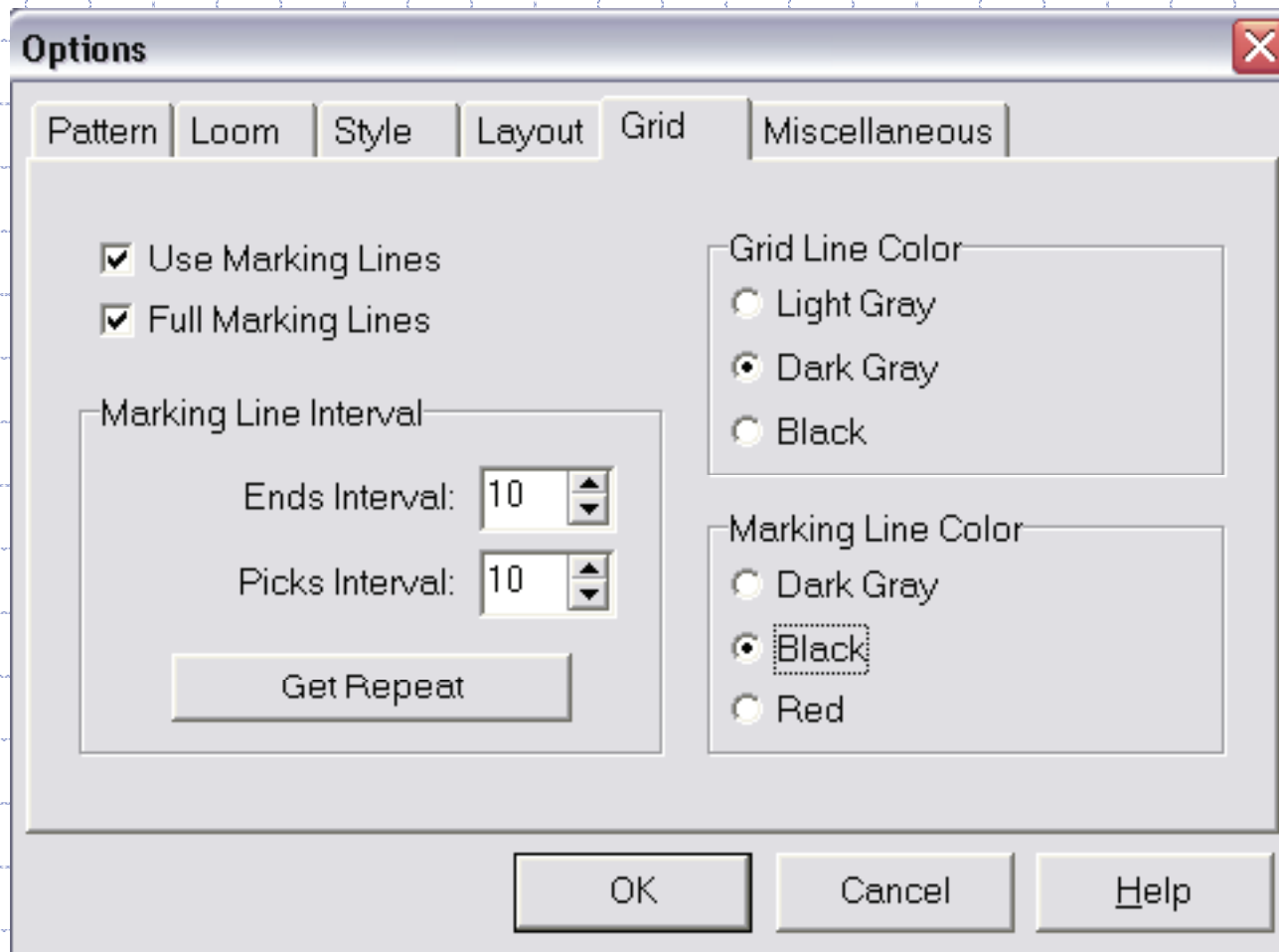
WeavePoint c. Style



WeavePoint d. Layout

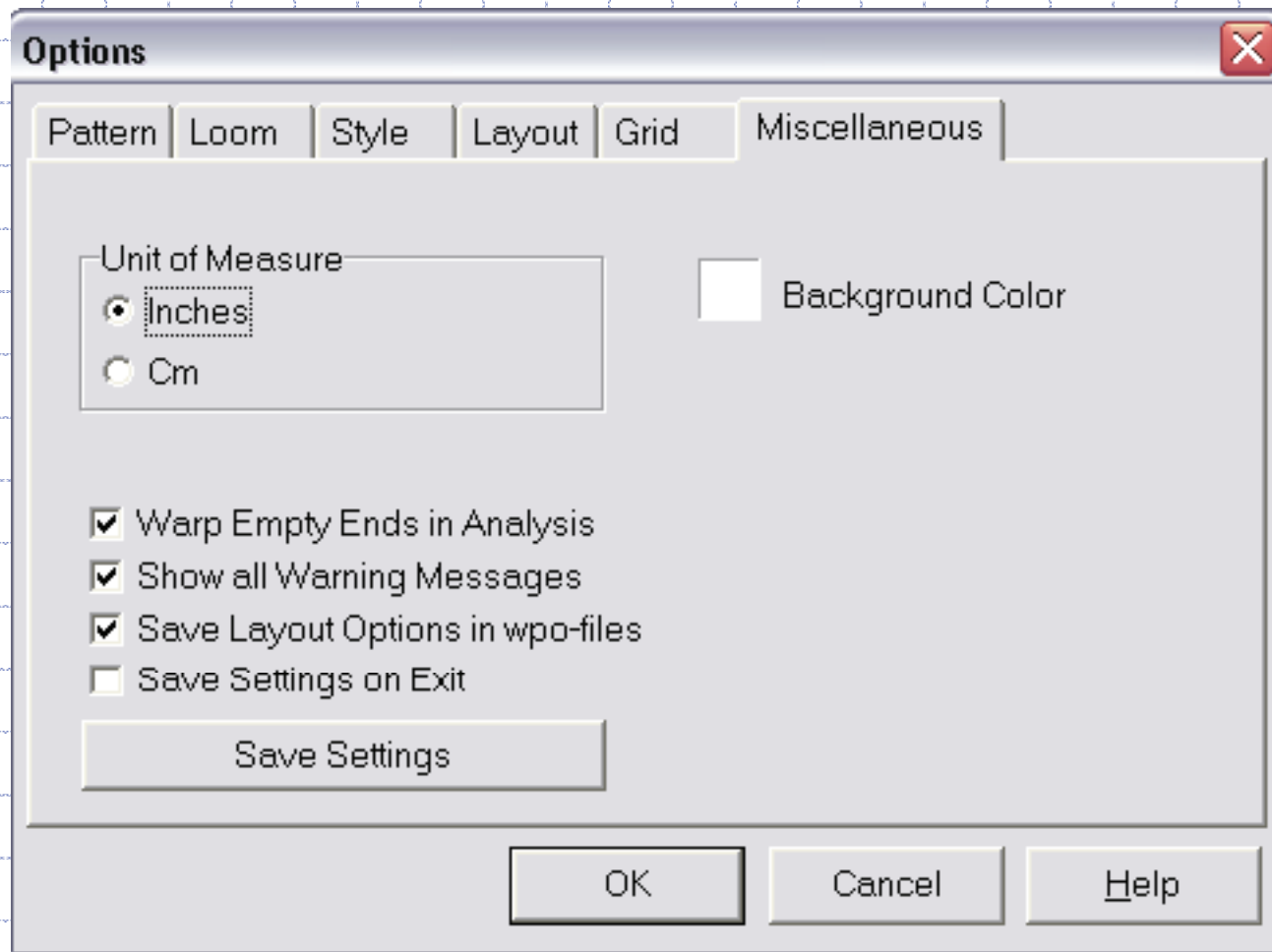


WeavePoint e. Grid

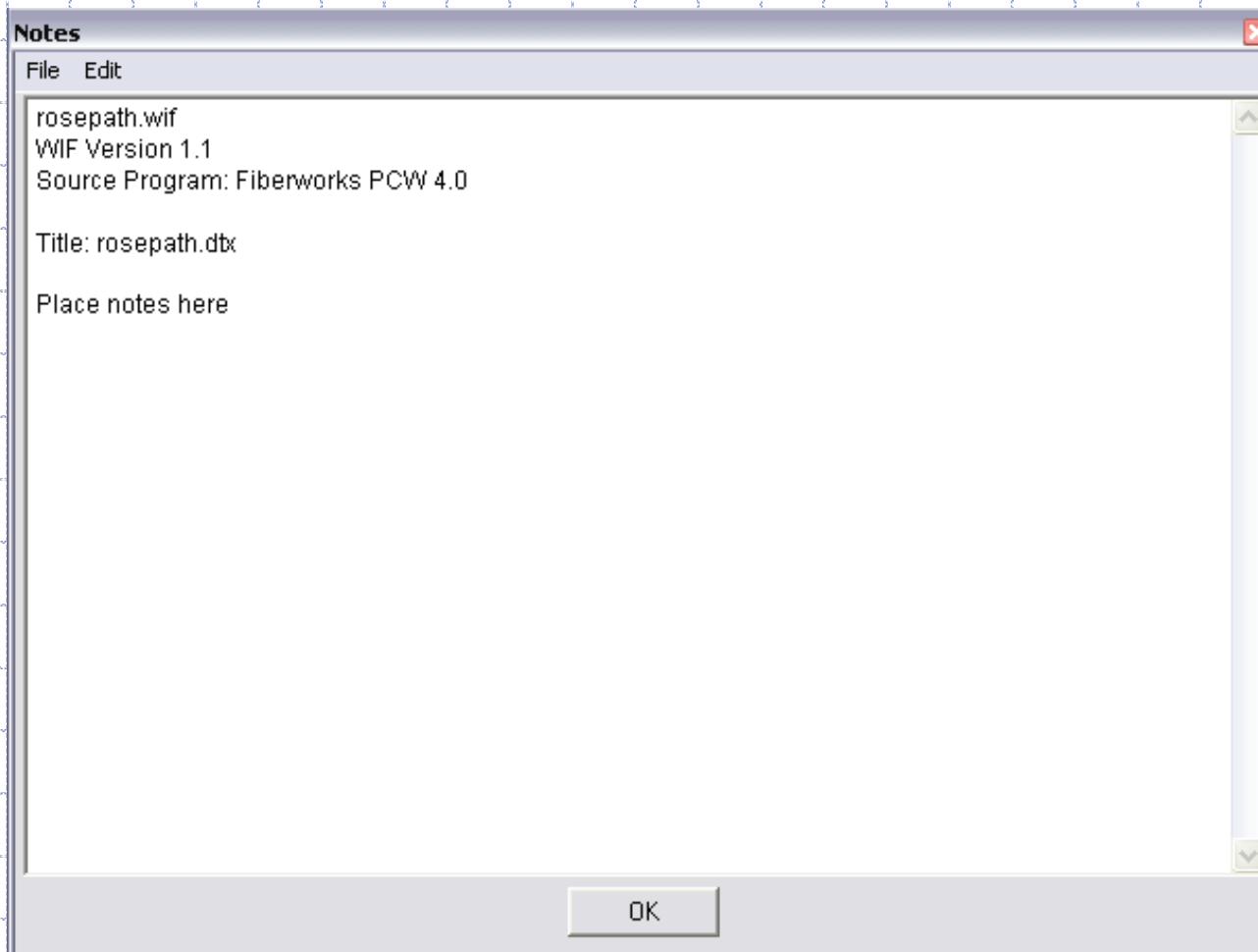


WeavePoint

f. Miscellaneous



WeavePoint g. Notes



9 Options → Notes

WeavePoint

h. Calculations

The screenshot shows the 'WeavePoint Project Planner' window. At the top, there is a menu bar with 'File', 'Special', and 'Help'. A dropdown menu is open under 'File', showing options: 'Options...', 'Units of Measure...', 'Save as Default', 'Copy to Clipboard', and 'Sectional Warping...'. To the right of the menu bar are buttons for 'Notes..' and 'Date: Oct 7, 2006'. The main area is divided into four sections: 'Warp' (left), 'Weft' (right), 'Warp Cost' (bottom left), and 'Weft Cost' (bottom right). Each section contains various input fields for measurements and costs.

Category	Field	Value	Unit	
Warp	Finished length:		yards	
	Shrinkage:	10	%	
	Woven length:			
	Test Samples:	0	inches	
	Take-up:	10	%	
	Fringes and Extras:	0	inches	
	Loom waste:	27	inches	
	On-loom length:			
	Sett (E.P.I.):			
	Number of ends:			
Total Yarn Length:				
Weft	Finished width:		inches	
	Shrinkage:	10	%	
	Woven width:			
	Draw-in:	5	%	
	Width in reed:		inches	
	P.P.I.:			
	Number of picks:			
	Total picks:			
	Total Yarn Length:			
	Warp Cost	Yards/lb		Total lb:
\$/lb:			Cost:	
Total Cost:				
Weft Cost	Yards/lb		Total lb:	
	\$/lb:		Cost:	
	Total Cost:			