

Drafting with Weaving Software

Open and Save Files

- ◆ 1. Open and Save Proprietary Files:
 - Each program may have a proprietary file type.
 - These files will only open in the program to which they belong.
- ◆ 2. Open/Save or Import/Export WIF Files
- ◆ 3. Import/Export Graphics Files
- ◆ 4. WIF files: Weaving Information Files
 - A standard for sharing weaving files among different weaving programs and the human reader.
 - Helps
- ◆ Note: 'Save' keeps the same file name and overwrites original file;
'Save As' allows you to change the name of a file and keeps both files.

WeaveMaker

1. Open/Save Proprietary Files

File types

- .wmd draft file
- .wmp color palette

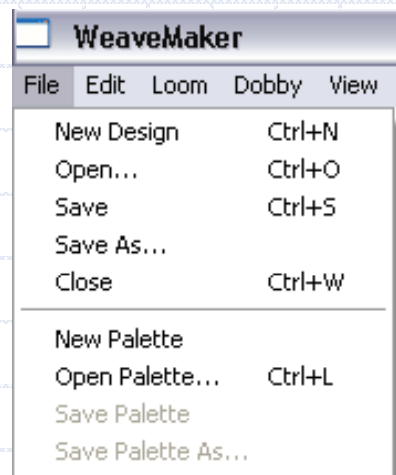
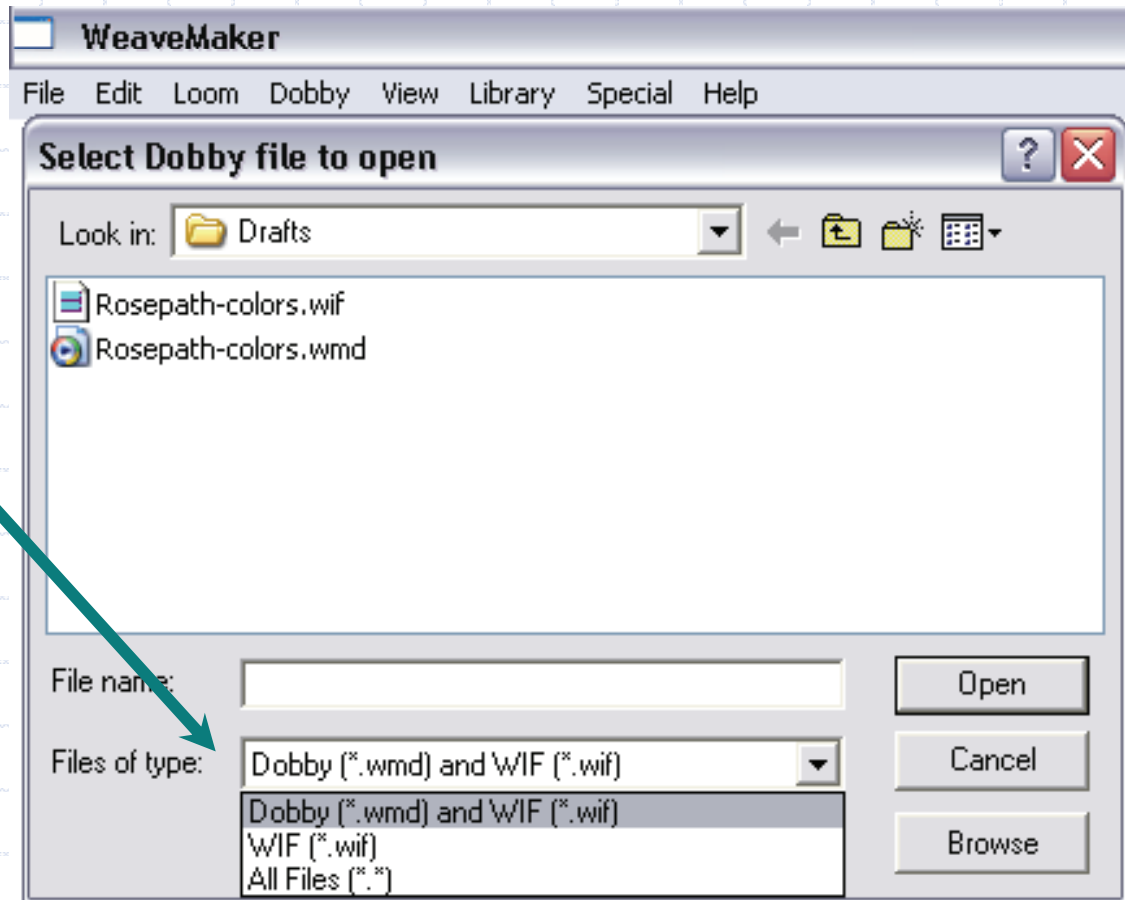
Use:

File → Open

Note: Both file types can be selected at the same time.

File → Save

File → Save As



WeaveMaker

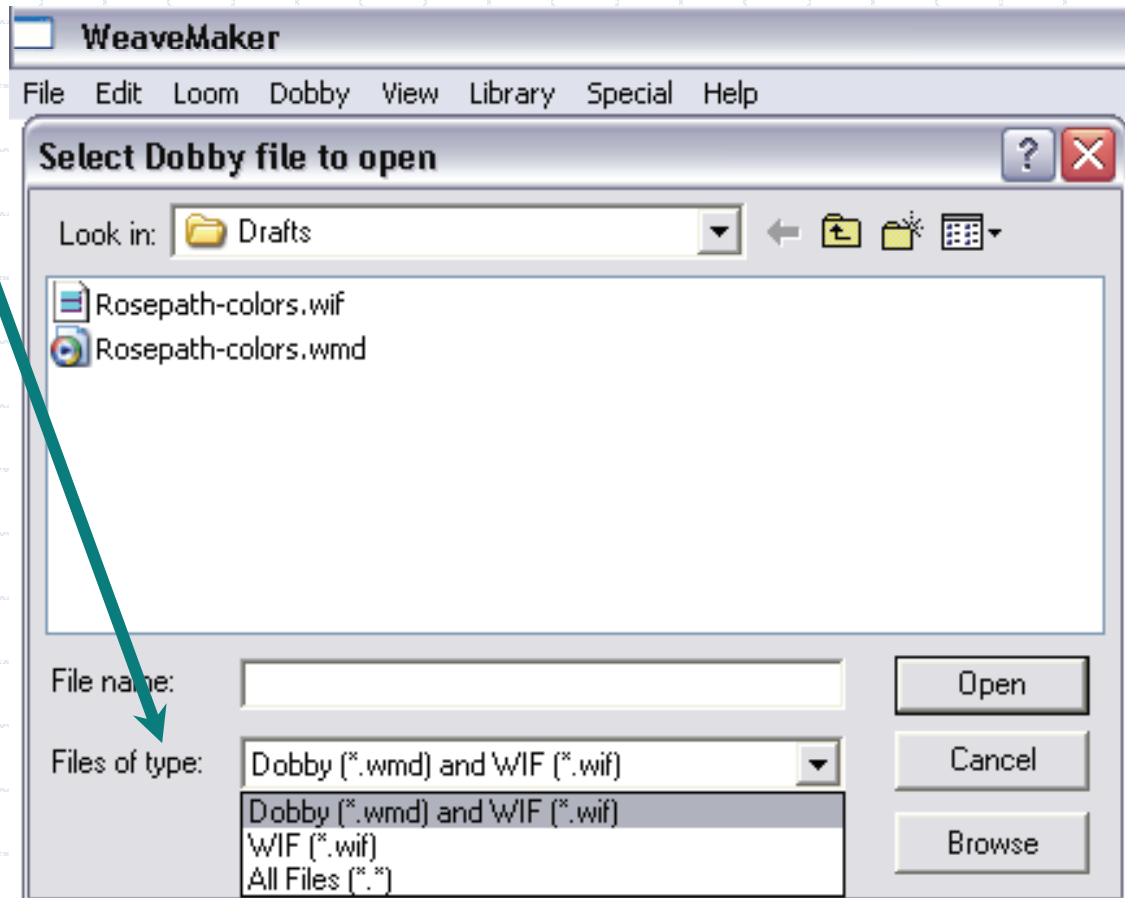
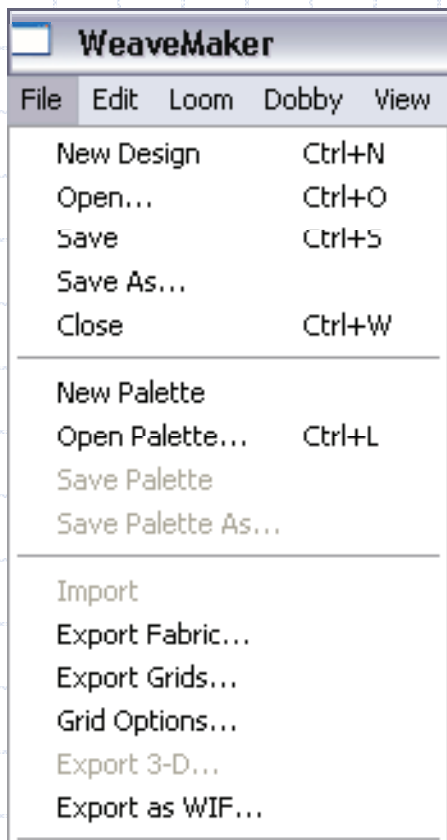
2. Open/Export WIF Files

Use:

File → Open

Note: Both file types or just WIF can be selected.

File → Export as WIF



WeaveMaker

3. Save TIF Files

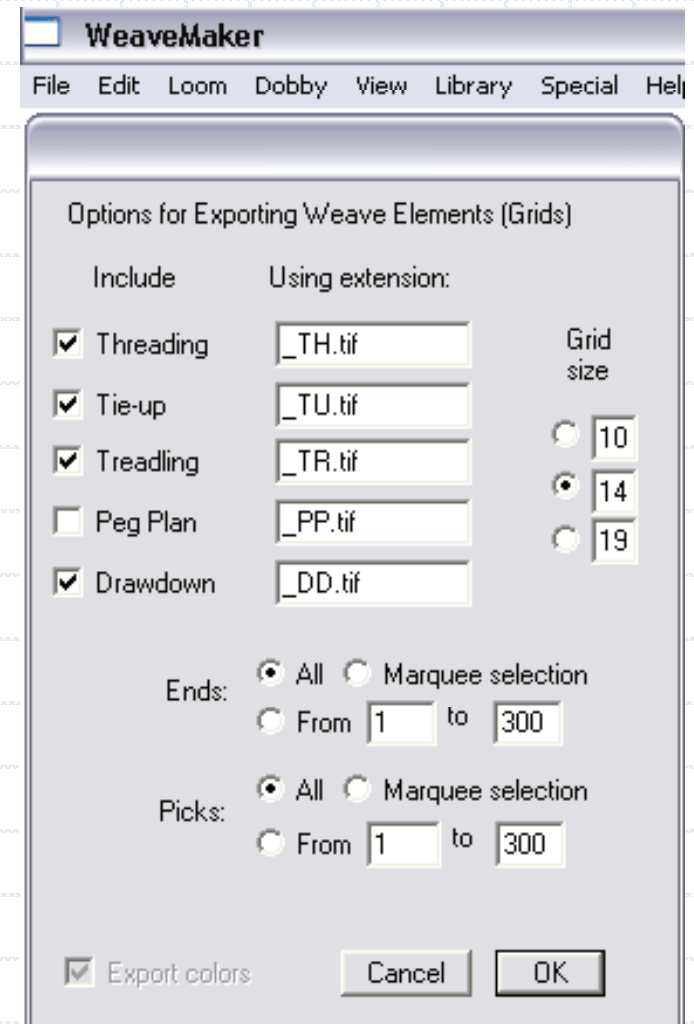
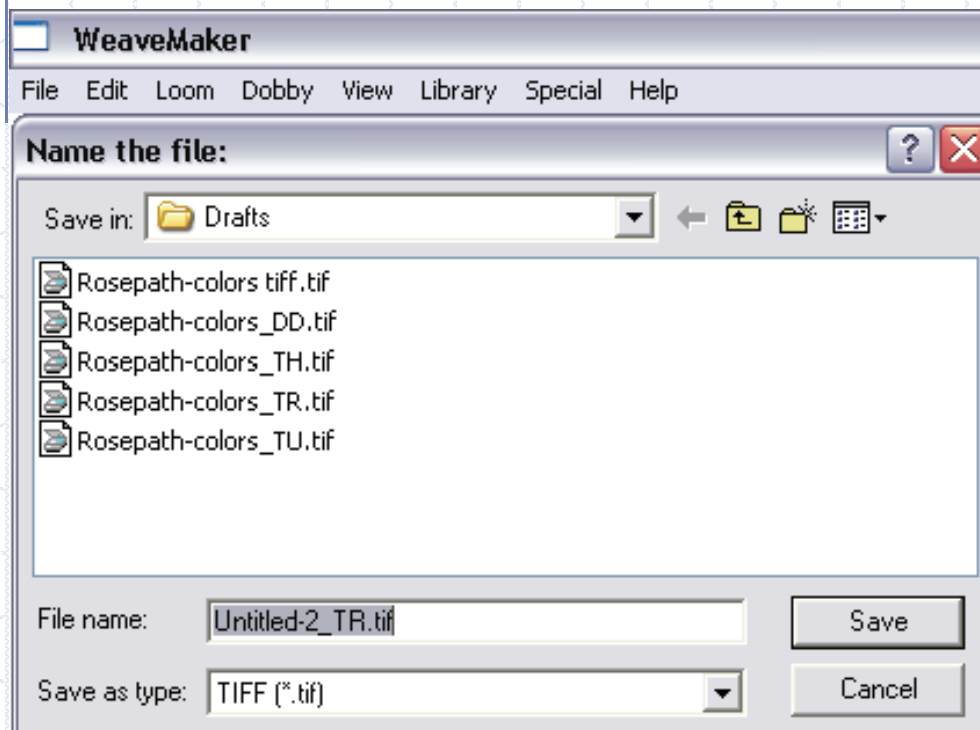
Use:

File → Export Fabric

File → Export Grid

File → Grid Options

File → Export 3D

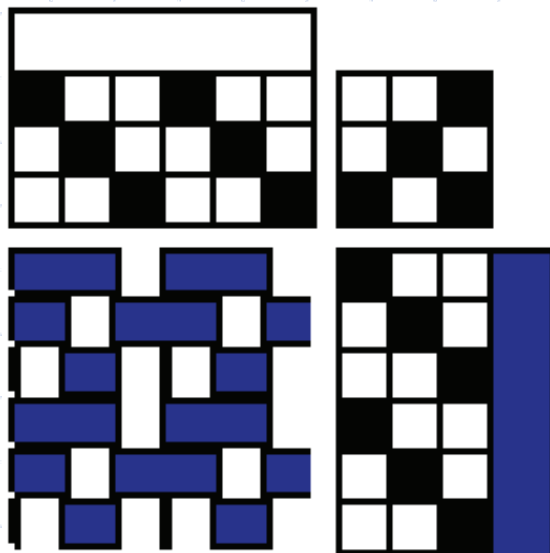


WIF Files

- ◆ WIF files are text files
- ◆ WIF files can be read in text editors such as Notepad (Windows) and Simple Text (Mac)
- ◆ See each program for information about opening/saving/exporting WIF files.

WIF Files

Part of a WIF file



[WIF]

Version=1.1

[CONTENTS]

COLOR PALETTE=true

TEXT=true

WEAVING=true

WARP=true

WEFT=true

COLOR TABLE=true

THREADING=true

TIEUP=true

TREADLING=true

WARP COLORS=true

WEFT COLORS=true

NOTES=true

[THREADING]

1=1

2=2

3=3

4=1

5=2

6=3

[TIEUP]

1=1

2=2

3=1,3

[TREADLING]

1=1

2=2

3=3

4=1

5=2

6=3

[WEAVING]

Rising Shed=true

Treadles=3

Shafts=3

WIF Files Helps

- ◆ WIF file does not open when clicked.
Open your weaving program and open/import the WIF file from the programs menu.
- ◆ It still will not open or opens incorrectly.
WIF files can have up to 255 shafts. If a draft has 73 shafts and your weaving software allows 32, it will not open or will open incorrectly. (Drawloom and pickup designs often have lots of shafts.)
- ◆ Check to see if the software has an update.
Often this solves the problem.

WIF Files—Helps

- ◆ The colors are not the same.
Colors often give different results when using WIF files. Using the default warp and weft colors often gives poor results. Experiment.
- ◆ Thickness does not appear in the draft.
Not all programs have a thickness feature.
- ◆ It appears as text in an email.
Copy the lines of text into Notepad or Simple Text. Do not use HTML or word processors. Save the file. For Windows make sure the file has a .WIF suffix. (Just rename the file and change .txt to .WIF.)

WIF Files—Helps

- ◆ The file will not open using a Mac.
Open the file in Simple Text and re-save it.
Email the file to yourself and save as text file.
Use SetItsType!.sit to help identify files.
- ◆ Look at files in a text editor.
Compare it to a WIF file that works in your software.
- ◆ Ask the software programmer for help.
- ◆ All of the programs included here write WIF files that can be opened by the other programs in Windows. I have tested many of them using OS8.6 and WeaveMaker.