

# Drafting with Weaving Software #1

## Open and Save Files

- ◆ 1. Open and Save Proprietary Files:
  - Each program may have a proprietary file type.
  - These files will only open in the program to which they belong.
- ◆ 2. Open/Save or Import/Export WIF Files
- ◆ 3. Import/Export Graphics Files
- ◆ 4. WIF files: Weaving Information Files
  - A standard for sharing weaving files among different weaving programs and the human reader.
  - Helps
- ◆ Note: 'Save' keeps the same file name and overwrites original file;  
'Save As' allows you to change the name of a file and keeps both files.

# pixeLoom

## 1. Open Proprietary Files

### File types

.plm draft files

Note: Tools → Options

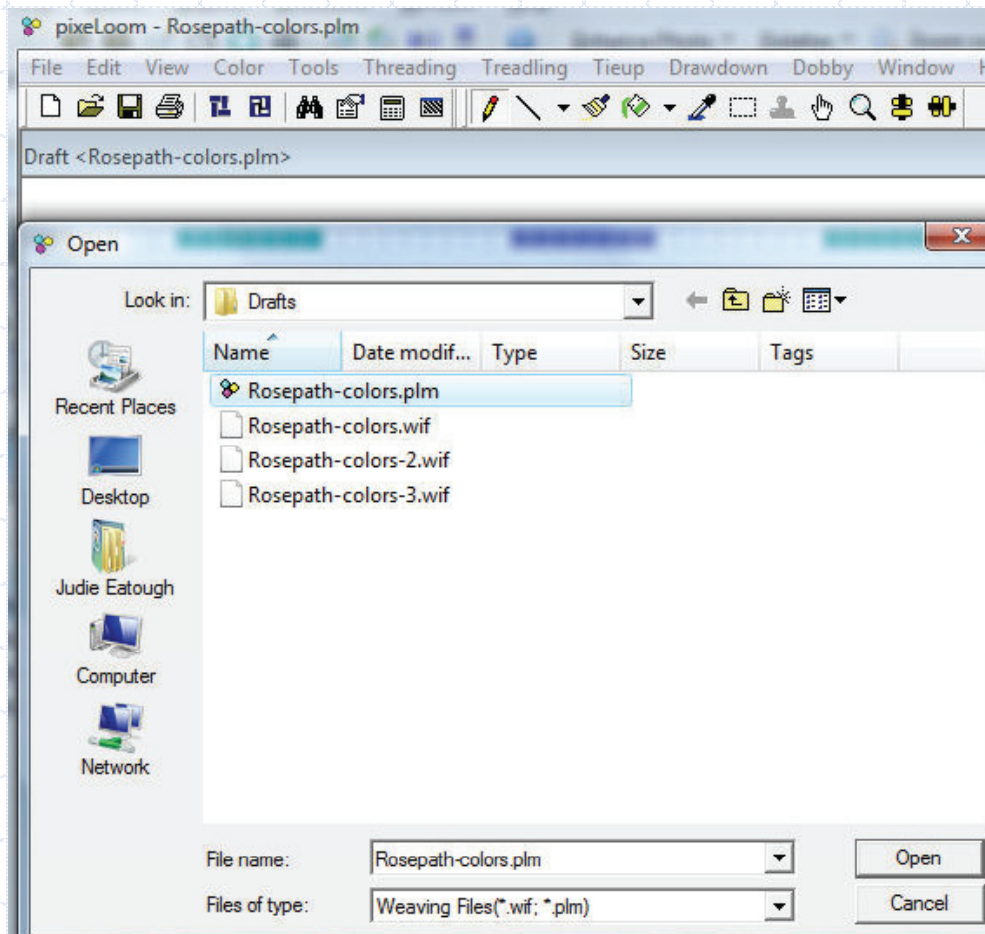
Choose file type for default

Note: Older versions of pixeLoom  
used the wif file only

Use:

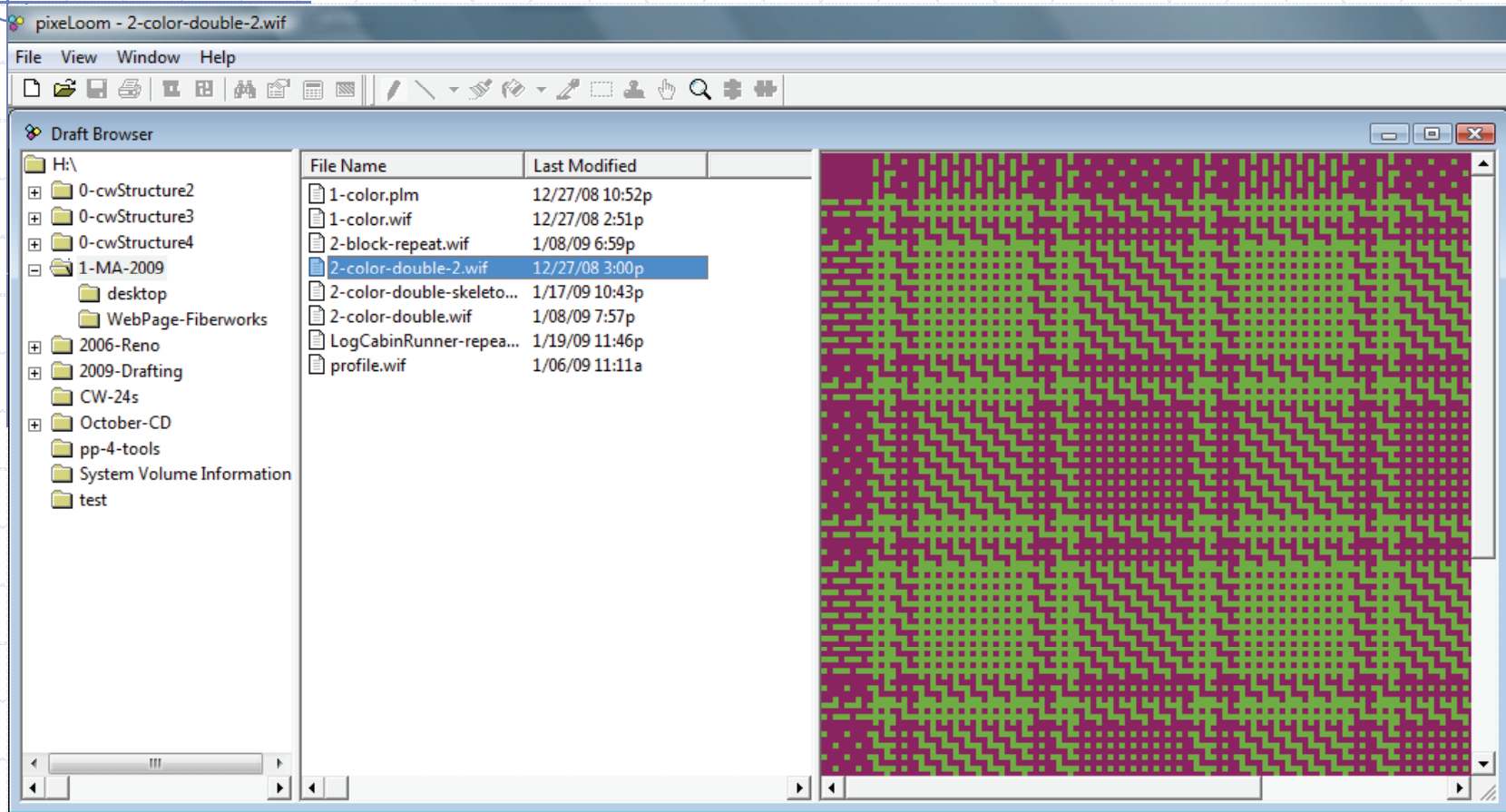
File → Open

Shows both types of files,  
plm and wif



# pixeLoom

## 1. Browse Proprietary Files



Use: File → Browse

Shows both types of files, plm and wif and drawdown

# pixeLoom

## 1b. Save Proprietary Files

Use:

File → Save

File → Save As

Tools → Options

Choose the default  
file type: plm or wif

If wif files are the  
default, you may  
change to plm by  
clicking on file type



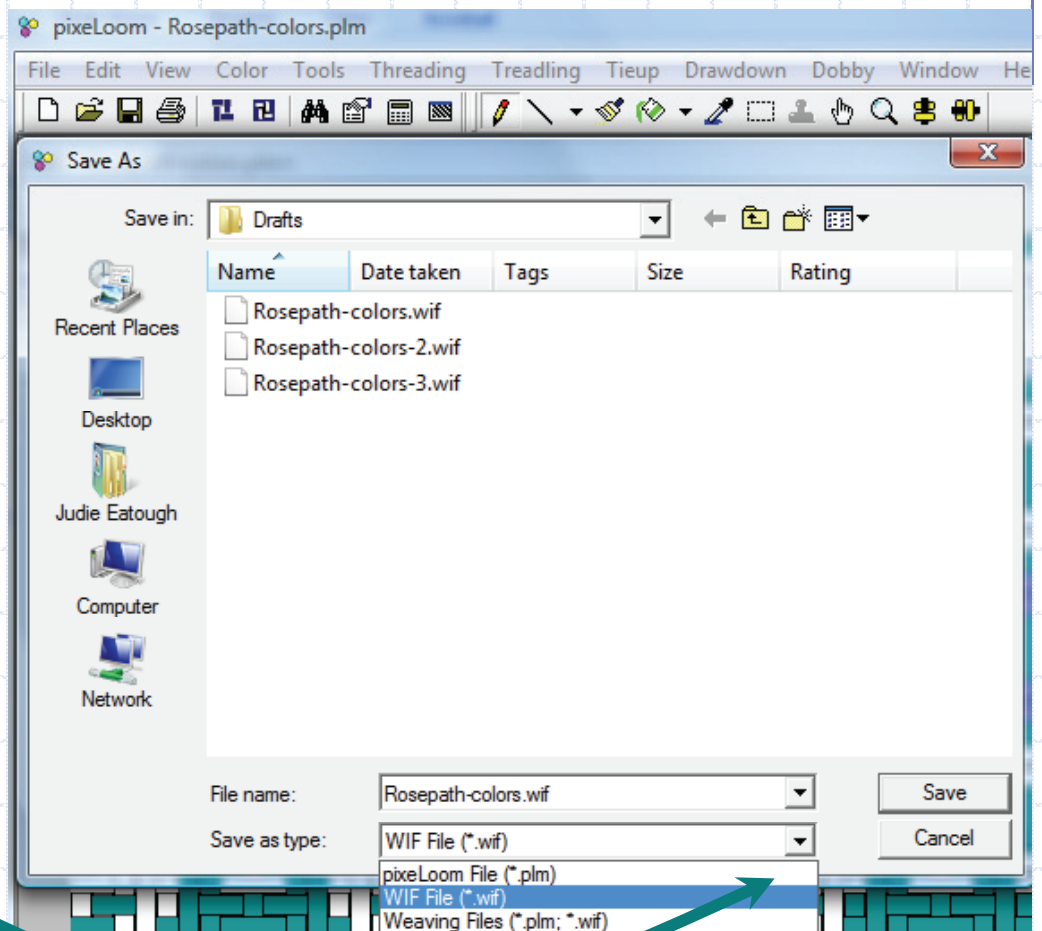
# pixeLoom

## 2. Open/Save WIF Files

Note: Tools → Options  
Choose file type for default

Note: Older versions of pixeLoom  
used the wif file only.  
Change Files of type to wif

Use:  
File → Open  
File → Save  
File → Save as



# pixeLoom

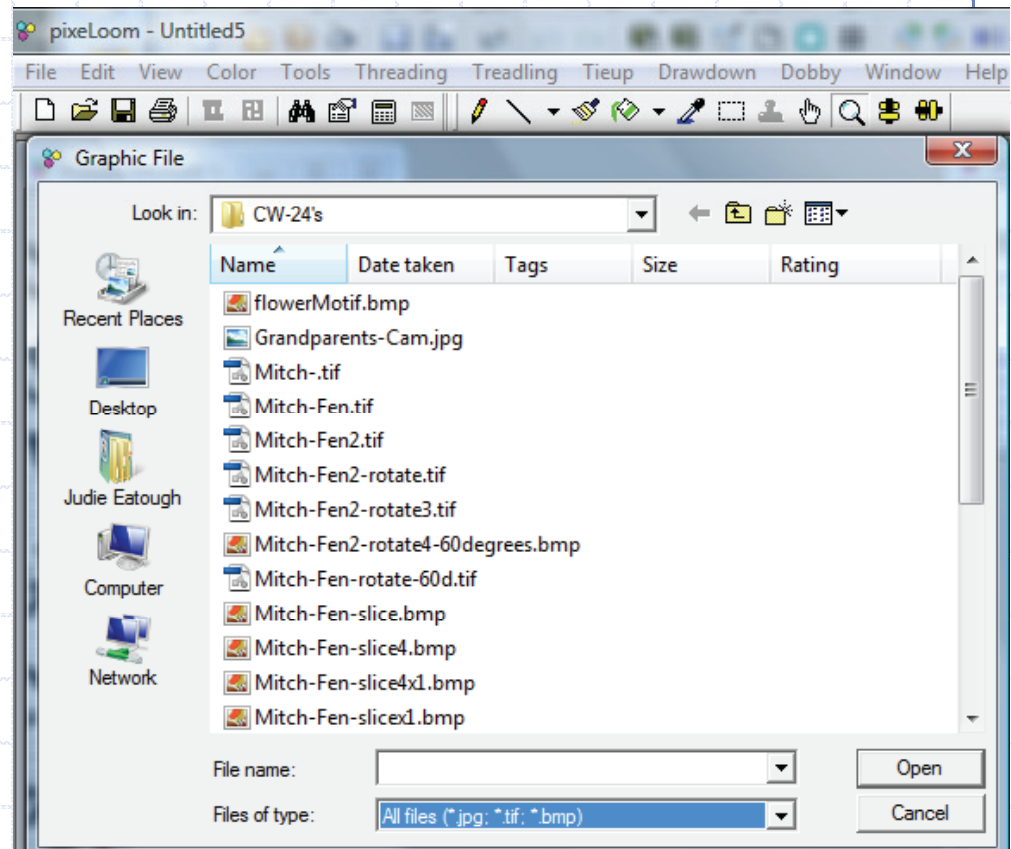
## 3. Open/Save Graphic

PixeLoom imports three types of graphics files, jpg, tif, and bmp.

Colors can be selected from a graphics file using the eyedropper tool.

Images can be manipulated and used for designs

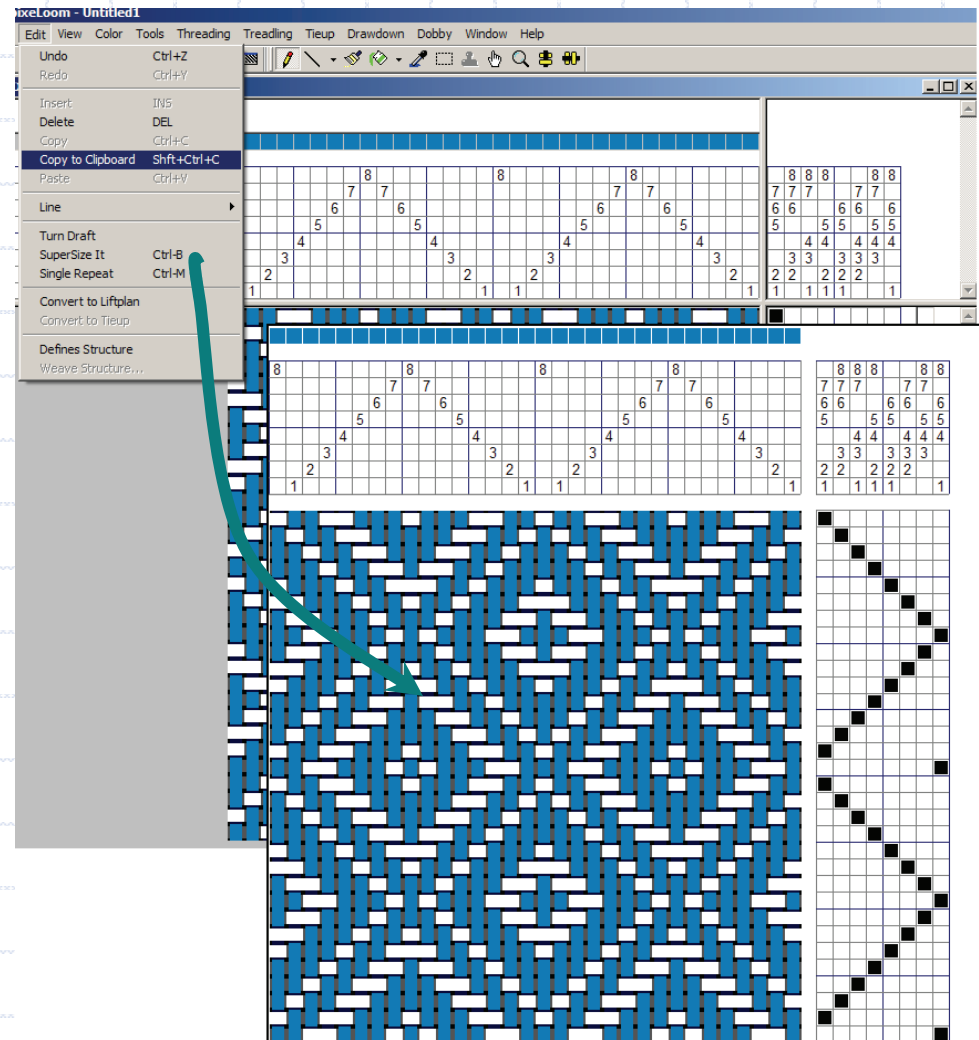
Single pixel images can be pasted into the liftplan



# pixeLoom

## 3. Import/Export Graphics Files

Clipboard feature:  
Edit → Copy to Clipboard  
Copies drawdown in the  
open window to the  
windows clipboard.  
Shortcut: Shift+Ctrl+C



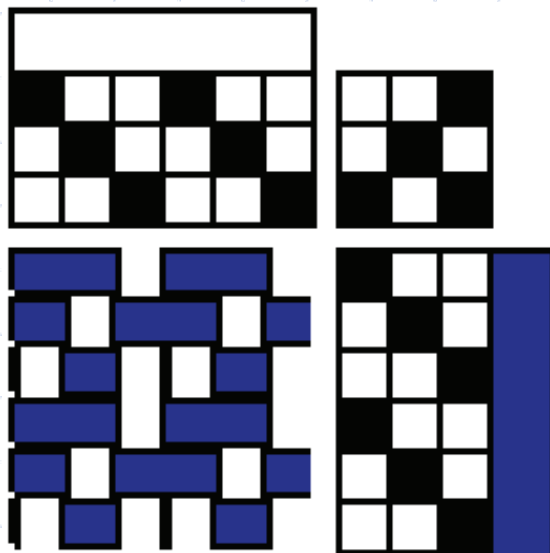
# WIF Files

- ◆ WIF files are text files
- ◆ WIF files can be read in text editors such as Notepad (Windows) and Simple Text (Mac)
- ◆ See each program for information about opening/saving/exporting WIF files.



# WIF Files

## Part of a WIF file



```
[WIF]
Version=1.1
```

```
[CONTENTS]
COLOR PALETTE=true
TEXT=true
WEAVING=true
WARP=true
WEFT=true
COLOR TABLE=true
THREADING=true
TIEUP=true
TREADLING=true
WARP COLORS=true
WEFT COLORS=true
NOTES=true
```

```
[THREADING]
1=1
2=2
3=3
4=1
5=2
6=3
```

```
[TIEUP]
1=1
2=2
3=1,3
```

```
[TREADLING]
1=1
2=2
3=3
4=1
5=2
6=3
```

```
[WEAVING]
Rising Shed=true
Treadles=3
Shafts=3
```

# WIF Files Helps

- ◆ WIF file does not open when clicked.  
Open your weaving program and open/import the WIF file from the programs menu.
- ◆ It still will not open or opens incorrectly.  
WIF files can have up to 255 shafts. If a draft has 73 shafts and your weaving software allows 32, it will not open or will open incorrectly. (Drawloom and pickup designs often have lots of shafts.)
- ◆ Check to see if the software has an update.  
Often this solves the problem.

# WIF Files—Helps

- ◆ The colors are not the same.  
Colors often give different results when using WIF files. Using the default warp and weft colors often gives poor results. Experiment.
- ◆ Thickness does not appear in the draft.  
Not all programs have a thickness feature.
- ◆ It appears as text in an email.  
Copy the lines of text into Notepad or Simple Text. Do not use HTML or word processors. Save the file. For Windows make sure the file has a .WIF suffix. (Just rename the file and change .txt to .WIF.)

# WIF Files—Helps

- ◆ The file will not open using a Mac.  
Open the file in Simple Text and re-save it.  
Email the file to yourself and save as text file.  
Use SetItsType!.sit to help identify files.
- ◆ Look at files in a text editor.  
Compare it to a WIF file that works in your software.
- ◆ Ask the software programmer for help.
- ◆ All of the programs included here write WIF files that can be opened by the other programs in Windows. I have tested many of them using OS8.6 and WeaveMaker.