

Convergence Workshop W304

One Warp: Several Structures

Yarn and loom information:

There are several choices for yarns and setts. Choose the one that seems best for you.

Use cotton -- size 10/2, 8/2, 5/2, or 3/2 – mercerized or unmercerized or Orlec 8/2

3 yard warps.

The drafts are 92-116 ends in length. You can repeat the draft for additional width if you would like. The second repeat can be the same or have color changes in the warp.

For colors I would recommend: Main color for warp, a contrasting color and a color similar in value to the main color. You will need about 500 yards of the main color, and 200 yards of the other two for each repeat. Additional colors are welcome.

Yarn to use	Sett	Reed	Sett	Reed	1 repeat-width
10/2 cotton	30 epi	15	24 epi	12	4 - 5 inches
8/2 cotton	20 epi	10	24 epi	12	5 – 6 inches
8/2 Orlec	20 epi	10	24 epi	12	5 – 6 inches
5/2 cotton	16 epi	8	20 epi	10	6 – 7.5 inches
3/2 cotton	12 epi	6 or 12	15 epi	15	8 – 10 inches

For example, I have lots of 5/2 and 6/2 cotton and decide to use that. I have an 8-dent reed, so I pick 16 for the sett. I will need 360 yards for a warp in all one color. I am threading the loom after I get to Convergence, so I decide I will only do one repeat. I have some green that I will use for the main color. I have blue and white to use for the secondary colors.. If I have some more colors, I might bring a bobbin or two extra.

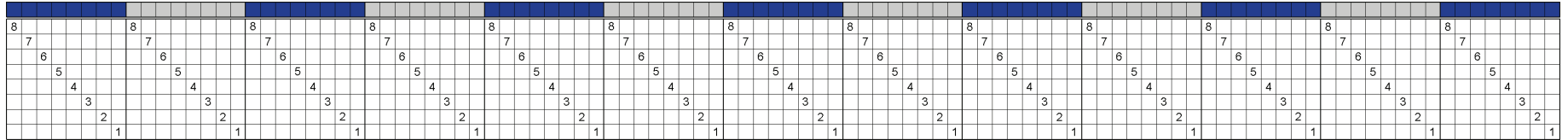
Shuttles to suit the loom. Boat shuttles are easiest, but stick shuttles will work.

Warping methods: Use your favorite method. I recommend the methods described on the Handwoven magazine web page:
http://www.interweave.com/weave/handwoven_magazine/web_projects/warping_basics.asp

Questions:

Judie Eatough
1252 Uinta Drive
Provo UT 84604

8-Shaft Drafts



Straight threading

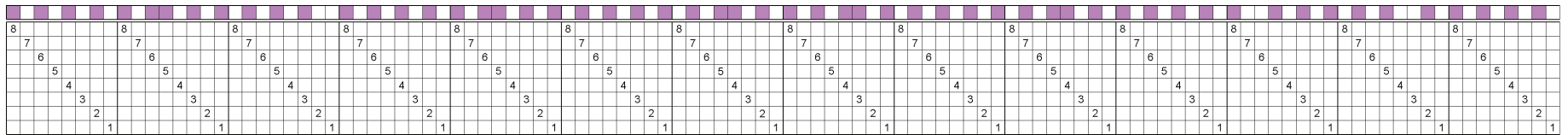
1. Thread all in one color
 - OR
 2. Thread above color order
- Use a light and dark color

Heddle Counts by Shaft Number:

Shaft	1	2	3	4	5	6	7	8
Count	13	13	13	13	13	13	13	13

of warp ends

blue	56
gray	48
Total warp ends:	104



Straight threading

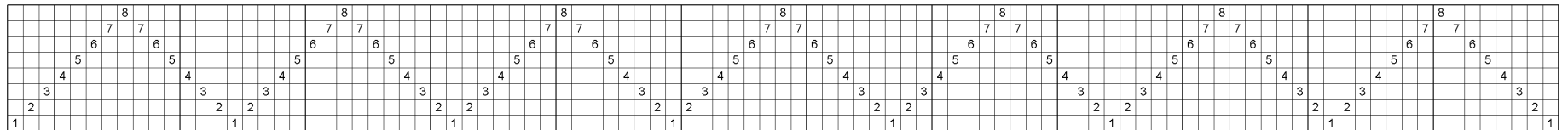
1. Thread all in one color
 - OR
 2. Thread above color order
- Use a light and medium color

Heddle Counts by Shaft Number:

Shaft	1	2	3	4	5	6	7	8
Count	14	14	14	14	14	14	14	14

of warp ends

white	55
violet	57
Total warp ends:	112



Point threading

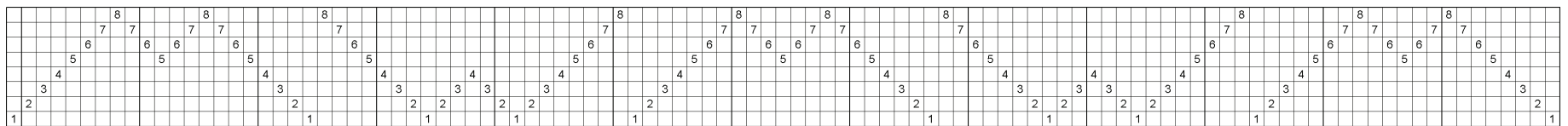
1. Thread all in one color

Heddle Counts by Shaft Number:

Shaft	1	2	3	4	5	6	7	8
Count	8	14	14	14	14	14	14	7

of warp ends

Total warp ends: 99



M's and W's Twill threading

1. Thread all in one color

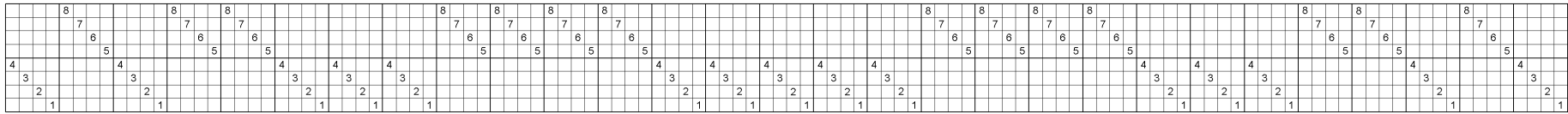
Heddle Counts by Shaft Number:

Shaft	1	2	3	4	5	6	7	8
Count	10	14	14	12	13	16	16	10

of warp ends

Total warp ends: 105

8-Shaft Drafts



Block threading

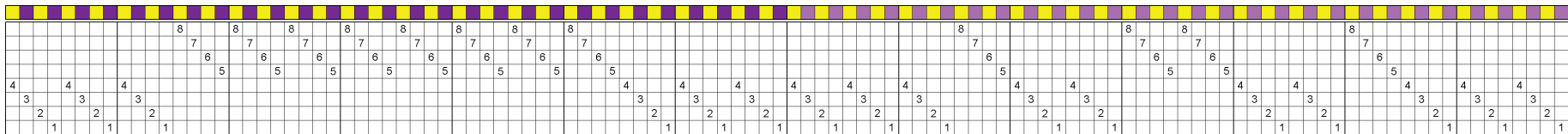
1. Thread all in one color

Heddle Counts by Shaft Number:

Shaft	1	2	3	4	5	6	7	8
Count	15	15	15	15	14	14	14	14

of warp ends

Total warp ends: 116



DW-Blocks threading

1. Thread all in one color

OR

2. Thread above color order

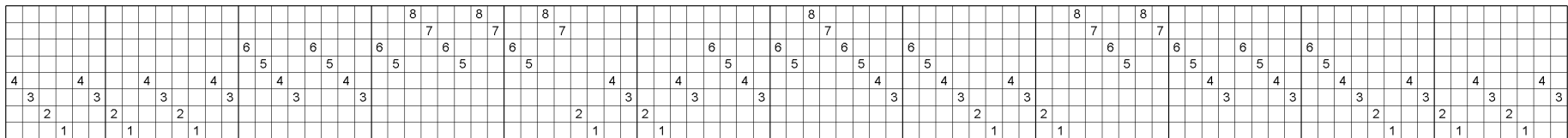
Use 2 shades of a hue and a contrast

Heddle Counts by Shaft Number:

Shaft	1	2	3	4	5	6	7	8
Count	16	16	16	16	12	12	12	12

of warp ends

yellow	56
dark violet	28
light violet	28
Total warp ends:	112



DW-Colonial threading

1. Thread all in one color

Heddle Counts by Shaft Number:

Shaft	1	2	3	4	5	6	7	8
Count	10	10	18	18	13	13	6	6

of warp ends

Total warp ends: 94