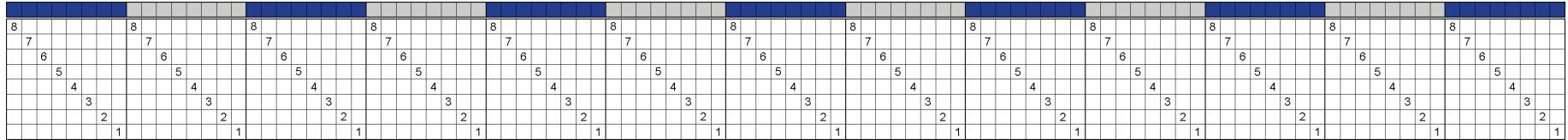




## 8-Shaft Drafts



**Straight threading**

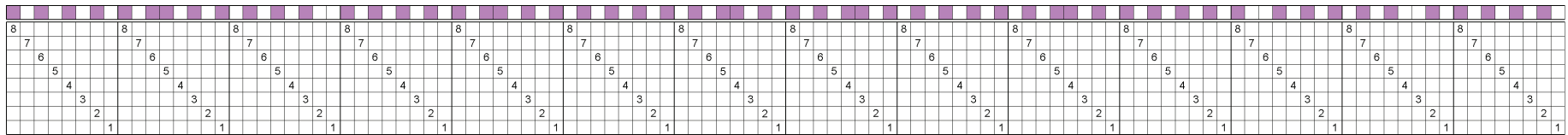
1. Thread all in one color
  - OR
  2. Thread above color order
- Use a light and dark color

**Heddle Counts by Shaft Number:**

Shaft	1	2	3	4	5	6	7	8
Count	13	13	13	13	13	13	13	13

**# of warp ends**

blue	56
gray	48
<b>Total warp ends:</b>	<b>104</b>



**Straight threading**

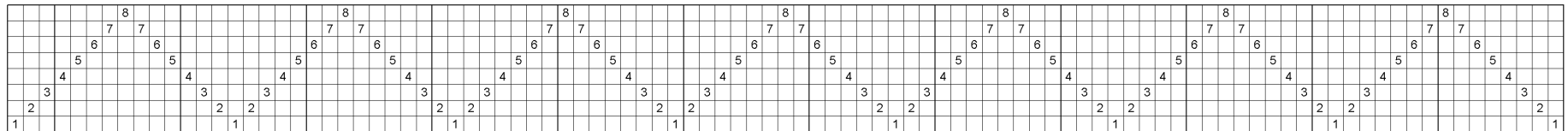
1. Thread all in one color
  - OR
  2. Thread above color order
- Use a light and medium color

**Heddle Counts by Shaft Number:**

Shaft	1	2	3	4	5	6	7	8
Count	14	14	14	14	14	14	14	14

**# of warp ends**

white	55
violet	57
<b>Total warp ends:</b>	<b>112</b>



**Point threading**

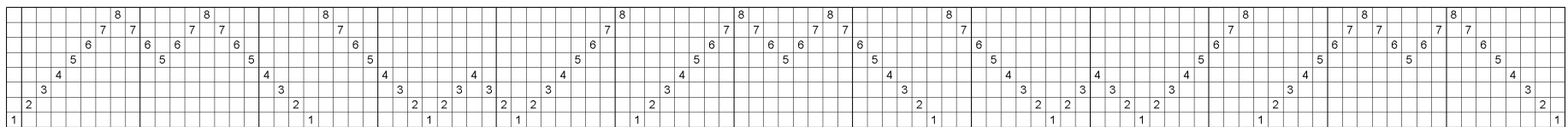
1. Thread all in one color

**Heddle Counts by Shaft Number:**

Shaft	1	2	3	4	5	6	7	8
Count	8	14	14	14	14	14	14	7

**# of warp ends**

**Total warp ends: 99**



**M's and W's Twill threading**

1. Thread all in one color

**Heddle Counts by Shaft Number:**

Shaft	1	2	3	4	5	6	7	8
Count	10	14	14	12	13	16	16	10

**# of warp ends**

**Total warp ends: 105**

