

Drafting with Weaving Software Preferences

◆ Preferences

- Configure program defaults
- Record Notes/Records
- Calculations
- Yarn Database

- ◆ Choose number of shafts, treadles, etc.
- ◆ Choose draft layout, symbols, view, magnification
- ◆ Miscellaneous settings
- ◆ Project records and calculations
- ◆ Yarn Databases with fiber, color, sett, cost, and/or vendor

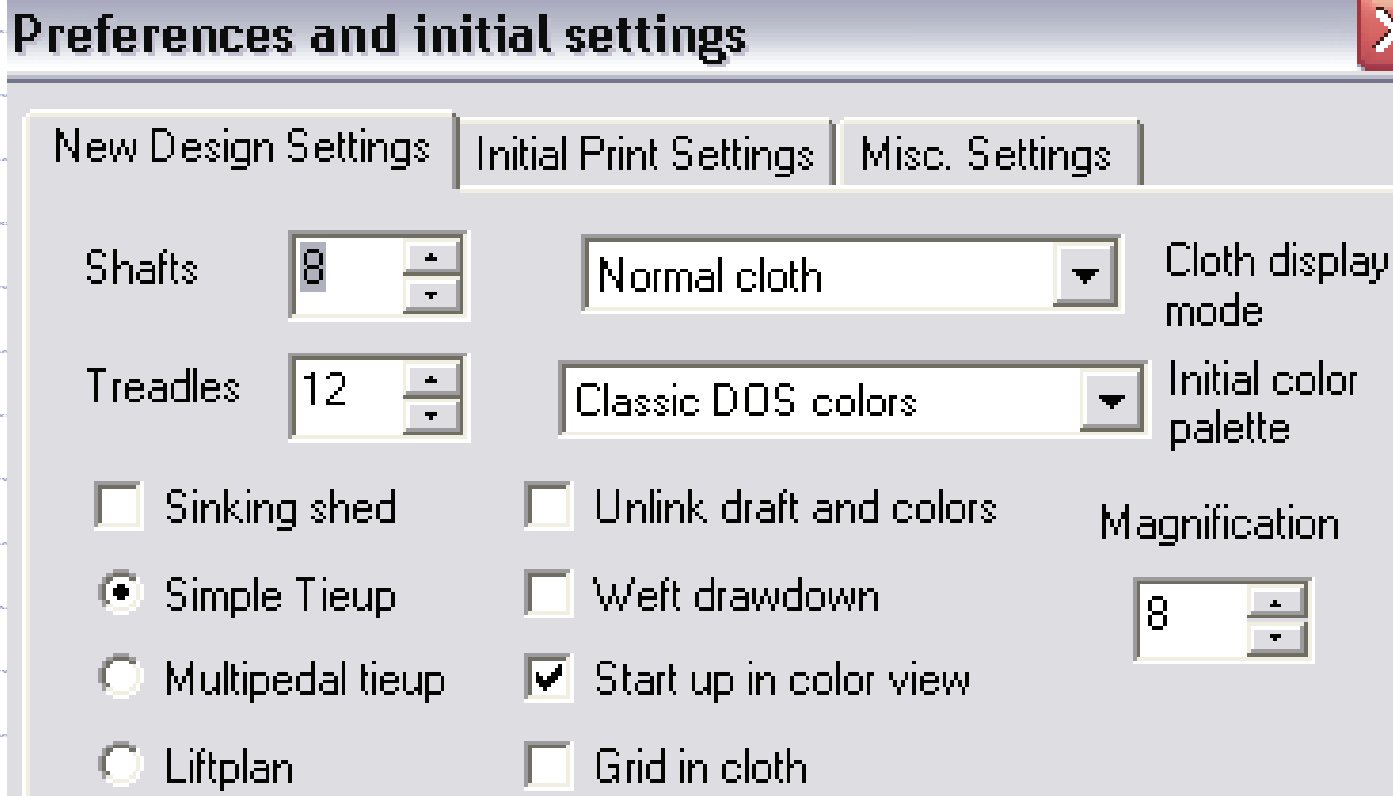
Fiberworks Bronze/Silver

Preferences

- a. New Design Settings View → Preferences
- b. Initial Print Settings View → Preferences
- c. Misc. Settings View → Preferences
- d. Records and Notes Cloth → Notes and Records
- e. No Calculations
- f. No Yarn Data

Fiberworks Bronze/Silver

a. New Design Settings



View → Preferences

Fiberworks Bronze/Silver

b. Initial Print Settings

New Design Settings | Initial Print Settings | Misc. Settings

Set Scale Fit Page Fit width Fit Height

Default ends per inch:

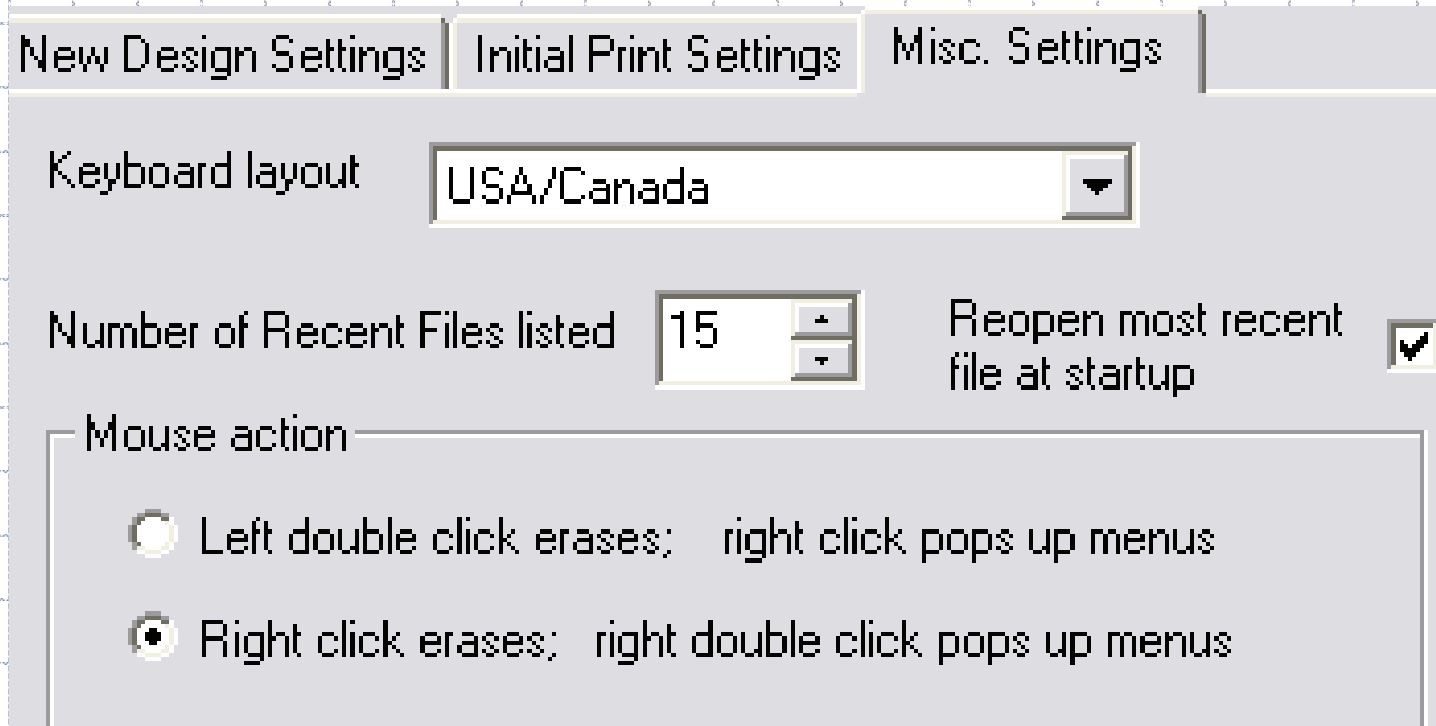
Include title
 At head At foot

Auto Apply changes Include Notes
 Numeric if possible Include Heddle counts
 Fill page if possible Include Color counts

View → Preferences

Fiberworks Bronze/Silver

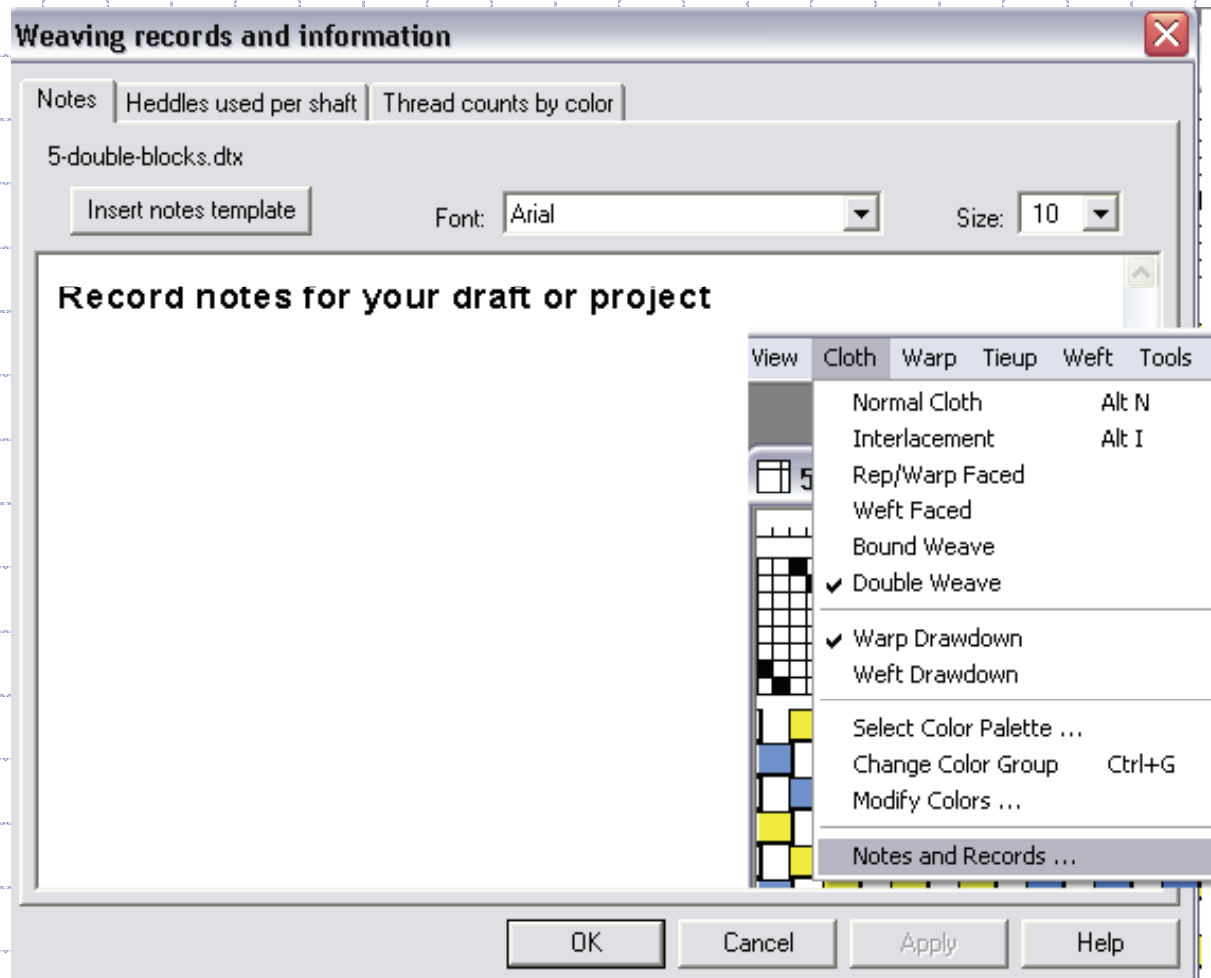
c. Misc. Settings



View → Preferences

Fiberworks Bronze/Silver

d. Records and Notes



6 Cloth → Notes and Records